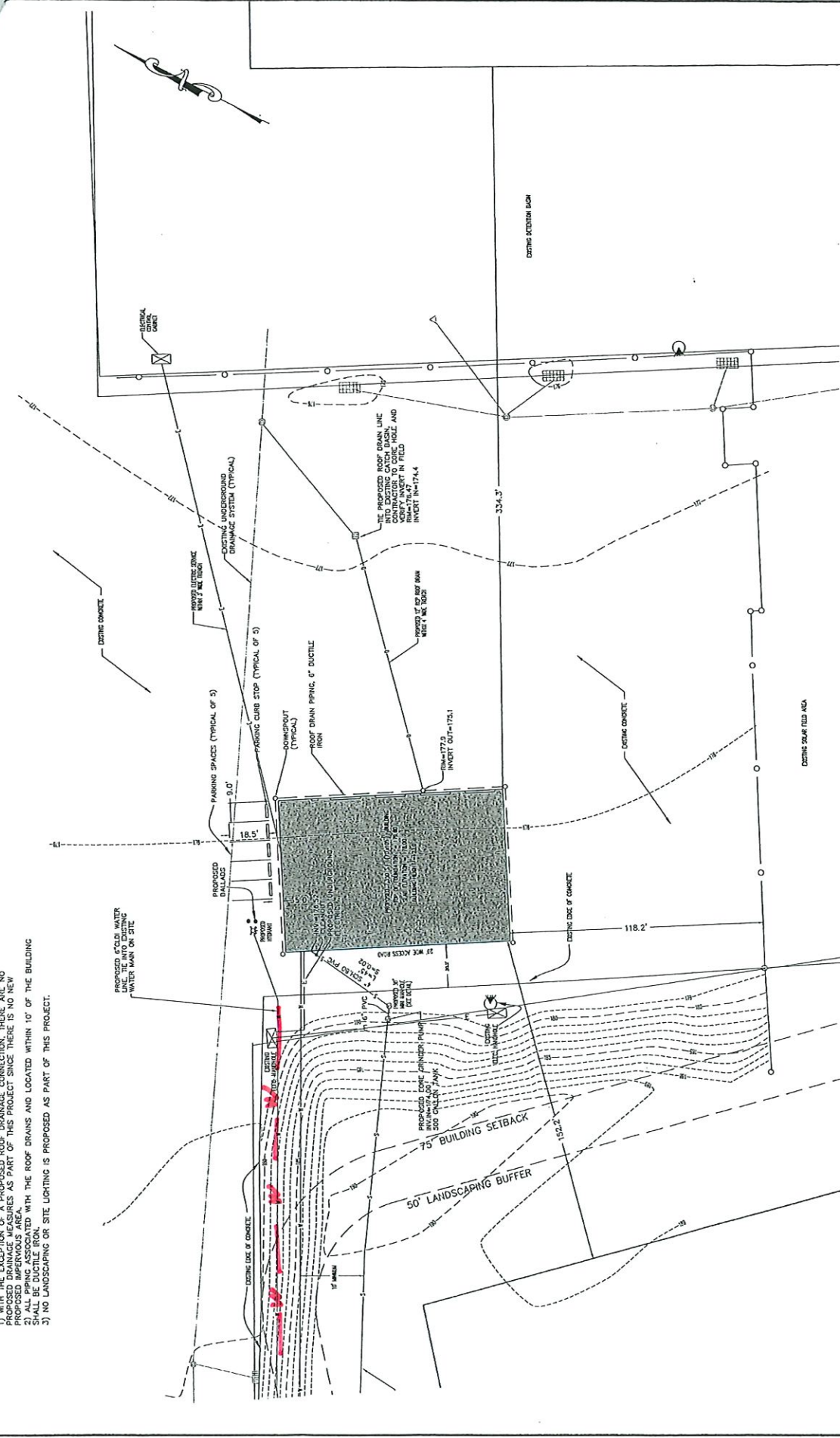
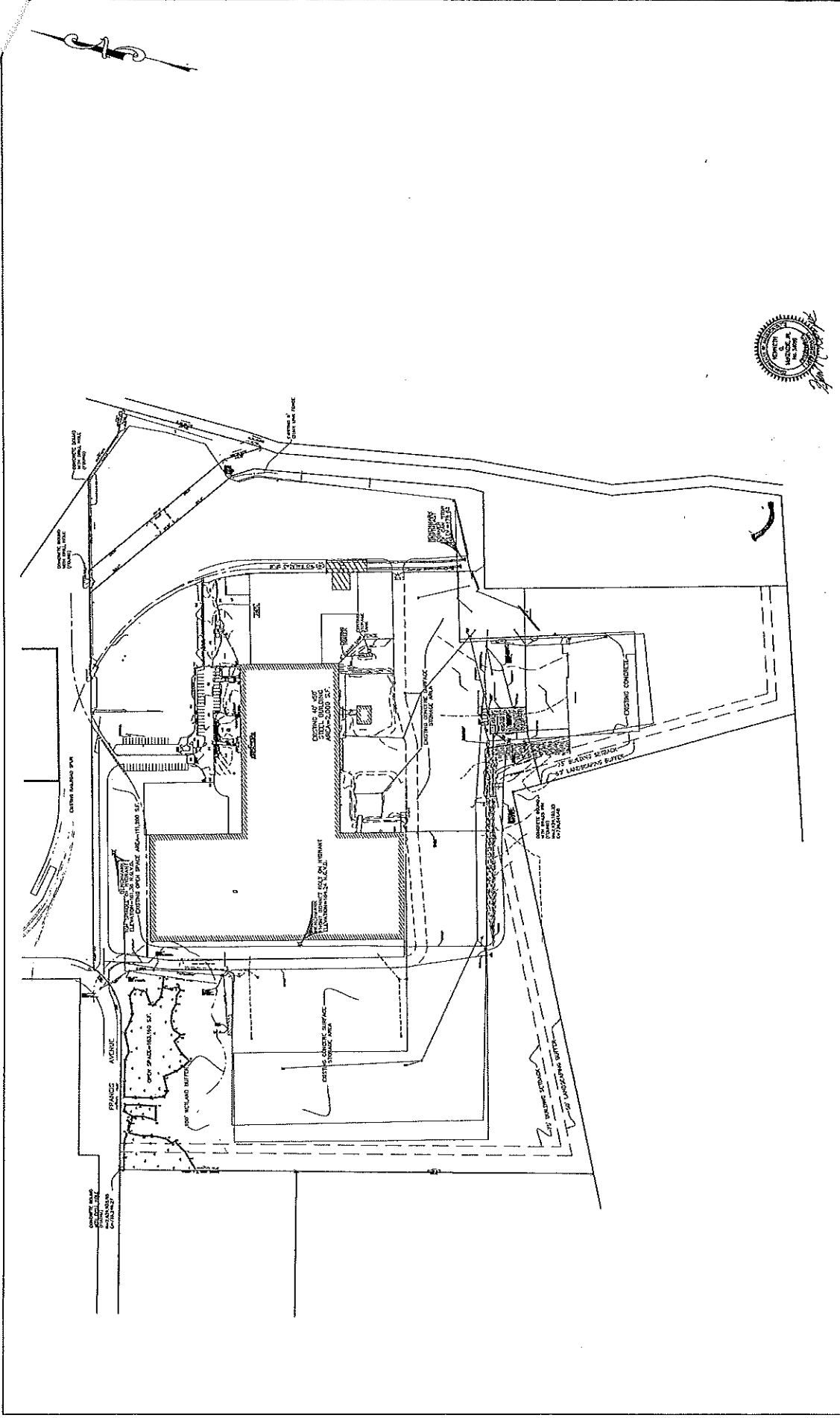


- NOTES:
- 1) THE LOCATION OF A PROPOSED ROOF DRAINAGE CONNECTION, THERE ARE NO PROPOSED EXTERIOR LIGHTS AS PART OF THIS PROJECT SINCE THERE IS NO NEW PROPOSED IMPERVIOUS AREA.
 - 2) ALL PIPING ASSOCIATED WITH THE ROOF DRAINS AND LOCATED WITHIN 10' OF THE BUILDING SHALL BE DUCTILE IRON.
 - 3) NO LANDSCAPING OR SITE LIGHTING IS PROPOSED AS PART OF THIS PROJECT.



BUILDING LAYOUT, & UTILITY Plan For land in MANSFIELD, MASSACHUSETTS 02048	
SHEET NO. 3	SCALE 1" = 20'
JOB NO. 3510-2	
OWNED BY: TRUST YAM REALTY TRUST MANSFIELD, MA 02048 PREPARED FOR: MINI WAREHOUSING INC. 241 FRANCIS AVENUE MANSFIELD, MA 02048	
DUNN · MCKENZIE, Inc. LAND SURVEYING AND CIVIL ENGINEERING 206 DEHAM STREET, R.L. 1A & R.L. 115 NORFOLK, MASSACHUSETTS 02056 (508) 384-3990 - FAX: (508) 384-3905 jimmy@dmckenzie.com	
RESEARCH BY: JMN FIELD SURVEY: KCM/JMN COMPUTED BY: JMN DRAFTED BY: JMN/BPG DESIGNED BY: BPG CHECKED BY: BW	TOOK COMMENTS 4/27/15 1/27/15 1/27/15 1/27/15 NO. DATE REVISIONS
DATE: JUNE 15, 2015	
ASSESSORS REFERENCE MAP 30 LOT 76 ZONING REFERENCE IZ LIMITED INDUSTRIAL	



LIMITED EXISTING CONDITIONS WITH
 PROPOSED UTILITY PLAN
 PROJECT NO. 02048
 MANSFIELD, MASSACHUSETTS
 SHEET NO. 2 SCALE 1" = 120'
 3510-2

DAVID J. VAM REALTY TRUST
 241 FRANCES AVENUE
 MANSFIELD, MA 02048
 REPRESED. 308.384.3950
 241 FRANCES AVENUE
 MANSFIELD, MA 02048

Dunn McKenzie, Inc.
 PLANS, SURVEYING AND CIVIL ENGINEERING
 208 BECHAM STREET, 8th FL. R. 115
 NORFOLK, MASSACHUSETTS 02056
 (508) 384-3950 - FAX (508) 384-3085
 Jimmy@dunnmckenzie.com

RESEARCH BY: JMN
 FIELD SURVEY: KGM/JMN
 COMPUTED BY: JMN
 DRAFTED BY: JMN/BPG
 DESIGNED BY: BPG
 CHECKED BY: BW

NO.	DATE	REVISIONS
1	11/20/15	TROUGH PERMITS PLANS
2	12/17/15	TOWN COMMENTS
3	1/14/16	TOWN COMMENTS
4	1/14/16	TOWN COMMENTS
5	1/14/16	TOWN COMMENTS
6	1/14/16	TOWN COMMENTS
7	1/14/16	TOWN COMMENTS
8	1/14/16	TOWN COMMENTS
9	1/14/16	TOWN COMMENTS
10	1/14/16	TOWN COMMENTS
11	1/14/16	TOWN COMMENTS
12	1/14/16	TOWN COMMENTS
13	1/14/16	TOWN COMMENTS
14	1/14/16	TOWN COMMENTS
15	1/14/16	TOWN COMMENTS
16	1/14/16	TOWN COMMENTS
17	1/14/16	TOWN COMMENTS
18	1/14/16	TOWN COMMENTS
19	1/14/16	TOWN COMMENTS
20	1/14/16	TOWN COMMENTS
21	1/14/16	TOWN COMMENTS
22	1/14/16	TOWN COMMENTS
23	1/14/16	TOWN COMMENTS
24	1/14/16	TOWN COMMENTS
25	1/14/16	TOWN COMMENTS
26	1/14/16	TOWN COMMENTS
27	1/14/16	TOWN COMMENTS
28	1/14/16	TOWN COMMENTS
29	1/14/16	TOWN COMMENTS
30	1/14/16	TOWN COMMENTS
31	1/14/16	TOWN COMMENTS
32	1/14/16	TOWN COMMENTS
33	1/14/16	TOWN COMMENTS
34	1/14/16	TOWN COMMENTS
35	1/14/16	TOWN COMMENTS
36	1/14/16	TOWN COMMENTS
37	1/14/16	TOWN COMMENTS
38	1/14/16	TOWN COMMENTS
39	1/14/16	TOWN COMMENTS
40	1/14/16	TOWN COMMENTS
41	1/14/16	TOWN COMMENTS
42	1/14/16	TOWN COMMENTS
43	1/14/16	TOWN COMMENTS
44	1/14/16	TOWN COMMENTS
45	1/14/16	TOWN COMMENTS
46	1/14/16	TOWN COMMENTS
47	1/14/16	TOWN COMMENTS
48	1/14/16	TOWN COMMENTS
49	1/14/16	TOWN COMMENTS
50	1/14/16	TOWN COMMENTS
51	1/14/16	TOWN COMMENTS
52	1/14/16	TOWN COMMENTS
53	1/14/16	TOWN COMMENTS
54	1/14/16	TOWN COMMENTS
55	1/14/16	TOWN COMMENTS
56	1/14/16	TOWN COMMENTS
57	1/14/16	TOWN COMMENTS
58	1/14/16	TOWN COMMENTS
59	1/14/16	TOWN COMMENTS
60	1/14/16	TOWN COMMENTS
61	1/14/16	TOWN COMMENTS
62	1/14/16	TOWN COMMENTS
63	1/14/16	TOWN COMMENTS
64	1/14/16	TOWN COMMENTS
65	1/14/16	TOWN COMMENTS
66	1/14/16	TOWN COMMENTS
67	1/14/16	TOWN COMMENTS
68	1/14/16	TOWN COMMENTS
69	1/14/16	TOWN COMMENTS
70	1/14/16	TOWN COMMENTS
71	1/14/16	TOWN COMMENTS
72	1/14/16	TOWN COMMENTS
73	1/14/16	TOWN COMMENTS
74	1/14/16	TOWN COMMENTS
75	1/14/16	TOWN COMMENTS
76	1/14/16	TOWN COMMENTS
77	1/14/16	TOWN COMMENTS
78	1/14/16	TOWN COMMENTS
79	1/14/16	TOWN COMMENTS
80	1/14/16	TOWN COMMENTS
81	1/14/16	TOWN COMMENTS
82	1/14/16	TOWN COMMENTS
83	1/14/16	TOWN COMMENTS
84	1/14/16	TOWN COMMENTS
85	1/14/16	TOWN COMMENTS
86	1/14/16	TOWN COMMENTS
87	1/14/16	TOWN COMMENTS
88	1/14/16	TOWN COMMENTS
89	1/14/16	TOWN COMMENTS
90	1/14/16	TOWN COMMENTS
91	1/14/16	TOWN COMMENTS
92	1/14/16	TOWN COMMENTS
93	1/14/16	TOWN COMMENTS
94	1/14/16	TOWN COMMENTS
95	1/14/16	TOWN COMMENTS
96	1/14/16	TOWN COMMENTS
97	1/14/16	TOWN COMMENTS
98	1/14/16	TOWN COMMENTS
99	1/14/16	TOWN COMMENTS
100	1/14/16	TOWN COMMENTS

ASSESSORS REFERENCE
 MAP 30 LOT 76
 ZONING REFERENCE
 I2 LIMITED INDUSTRIAL