

## COMMUNITY UPDATE COVID-19

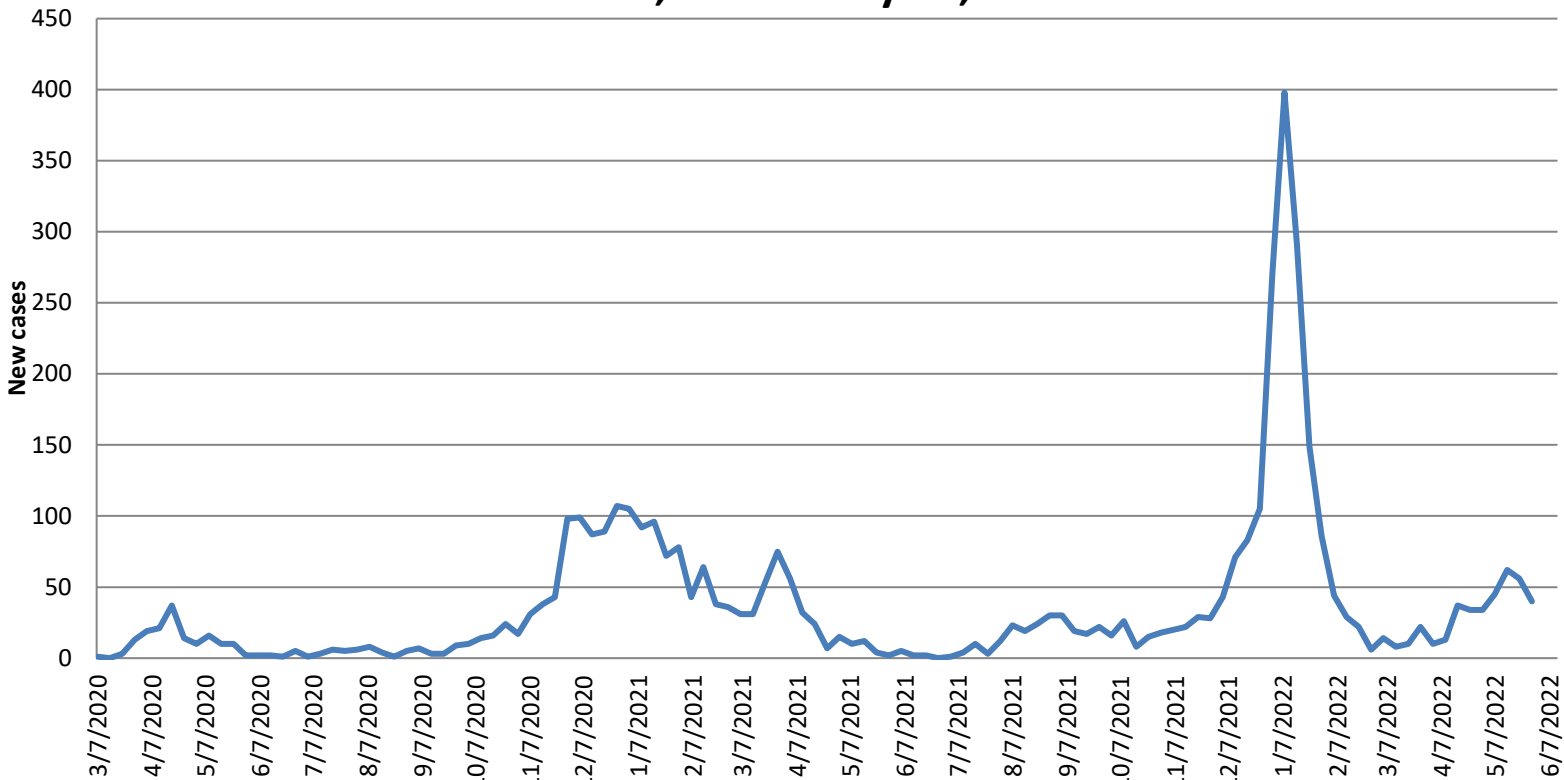
**June 1, 2022:**

The Town of Mansfield continues its community update on our website with our up to date information and important tips for the public as it relates to the COVID-19 pandemic. For more complete information, please see the town [coronavirus webpage](#).

- **As of today, please see the below chart that represents our communities COVID-19 relates cases:**

| <i>Mansfield Covid-19 Workflow</i>            | #           |                                       |
|---|-------------|---------------------------------------|
| <b>Positive COVID-19 under isolation</b>      | <b>37</b>   | (updated 06/01 08:00)                 |
| <b>Positive Cases recovered</b>               | <b>4530</b> |                                       |
| <b>Total tested positive since beginning:</b> | <b>4605</b> |                                       |
| <b>Covid-19 Related Deaths</b>                | <b>38</b>   | Last Covid death in Mansfield 5/20/22 |

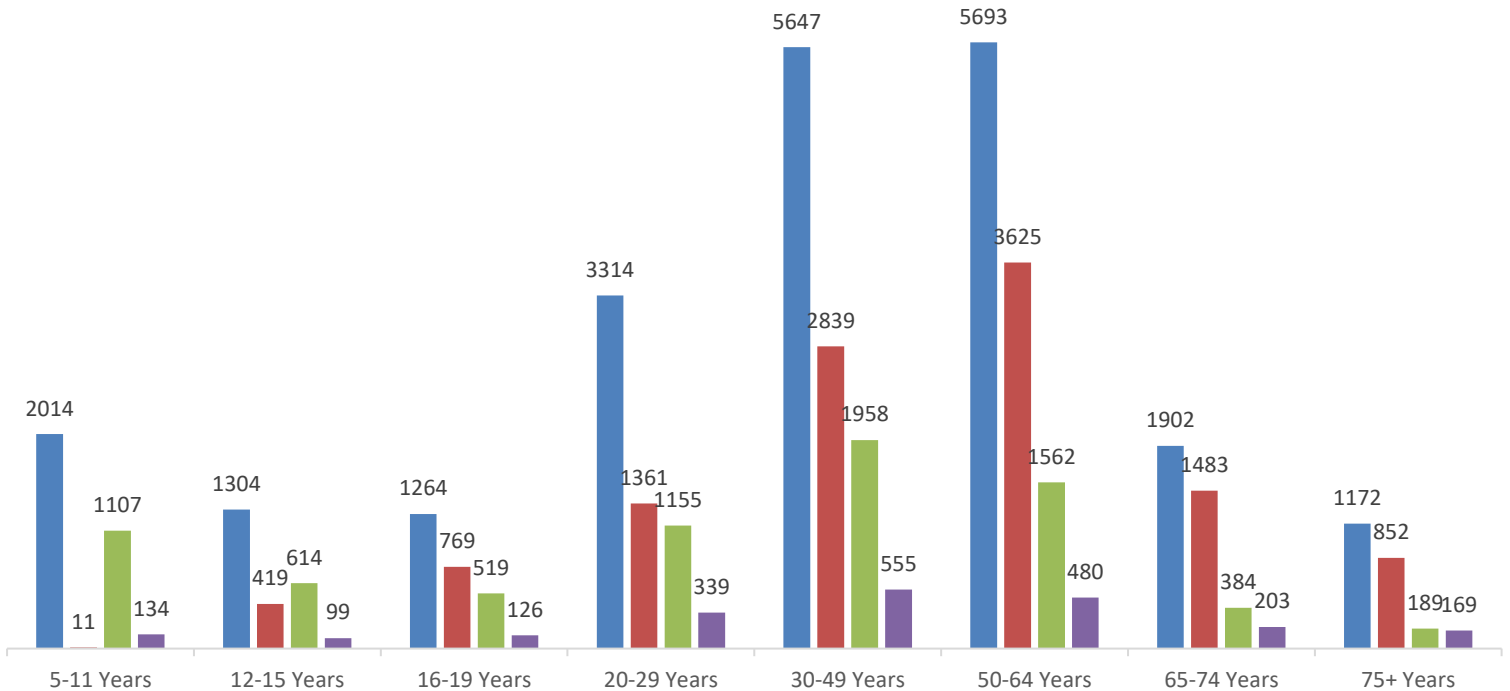
**New COVID-19 cases per week\***  
**March 7, 2020 - May 28, 2022**



\* At home test results are not reported nor included in state data

## Vaccine Distribution in Mansfield- data through May 24, 2022

■ Population ■ Individuals with booster doses ■ Fully vaccinated individual, no booster ■ Partially vaccinated individuals



All data obtained from [Massachusetts COVID-19 vaccination data and updates | Mass.gov](https://www.mass.gov/info-details/massachusetts-covid-19-vaccination-data-and-updates)

### Do You Need a COVID-19 Test?

Review the questions below to determine when to get tested. If you have had COVID-19 in the past 90 days and recovered, you do not need to be tested unless you develop new symptoms.

- **Do you have COVID-19 symptoms?**  
Get tested immediately.
- **Have you had close contact exposure to someone with COVID-19?** Get tested at least 5 days after exposure.
- **Are you traveling?** Learn more about testing for travel by visiting [Travel | CDC](https://www.cdc.gov/travel)
- **Are you planning to attend an upcoming event or gathering?**  
Reduce the risk of spreading COVID-19 by getting tested as close to the event date as possible.



- [Public Health Advisory regarding COVID-19 Testing](#)

**Household in the U.S. are now eligible to order a third round of free at-home test kits.** Each order will include eight rapid antigen COVID-19 tests, shipped for free. Order free At-Home COVID-19 Tests: <https://special.usps.com/testkits>

The Massachusetts Department of Public Health advises all residents to seek COVID-19 tests when exhibiting [COVID symptoms](#), or five days following a known close contact with someone diagnosed with COVID pursuant to MA DPH quarantine and isolation protocols, updated in accordance with the new CDC guidance.

#### **Important Links for Testing:**

- CDC's online COVID-19 Viral Testing Tool: <https://bit.ly/covid-testing-tool>
- MA DPH COVID-19 Testing information: <https://www.mass.gov/covid-19-testing>
- Find a COVID-19 Test: <https://www.mass.gov/info-details/find-a-covid-19-test>
- Using a COVID-19 Self-Test: <https://www.mass.gov/info-details/using-a-covid-19-self-test>
- CDC COVID-19 Testing: <https://www.cdc.gov/coronavirus/2019-ncov/testing/index.html>

- [Get Vaccinated and Boosted Against COVID-19 for individuals age 5+](#)

The Centers for Disease Control and Prevention (CDC) recommends that [Americans stay "up to date" with COVID-19 vaccines](#), rather than be "fully vaccinated." Up to date means a person has received all recommended COVID-19 vaccines, including any booster dose(s) when eligible. Fully vaccinated means a person has received their primary series of COVID-19 vaccines.

#### **Who is eligible to get a booster?**

CDC recommends everyone ages 5 years and older receive a COVID-19 vaccine booster after completing their primary COVID-19 vaccination series. Some people can receive two boosters. The CDC new [interactive tool](#) helps users identify whether they (or someone else) need to receive a booster dose of COVID-19 vaccine.

#### 1st booster

Everyone age 5 and older can get a booster after they have had their primary vaccine series:

- At least 5 months after completion of an mRNA (Pfizer or Moderna) vaccine primary series
- At least 2 months after completion of a Janssen/J&J primary dose.

#### 2nd booster

- Anyone age 50 and older may get a 2nd booster at least 4 months after their 1st booster
- All people aged 12 years and older who are moderately or severely immunocompromised
- Anyone age 18-49 years who are not moderately or severely immunocompromised and who received Janssen/J&J COVID-19 Vaccine as both their primary series dose and their booster dose, at least 4 months after the first Janssen booster dose

Three COVID-19 vaccines are authorized or approved for use in the United States to prevent COVID-19. You can mix and match vaccines. Your booster does not need to be the same vaccine brand as your original COVID-19 vaccination. If you are ages 5-17, you can only get a Pfizer booster. Pfizer-BioNTech or Moderna (COVID-19 mRNA vaccines) are preferred. You may get Johnson & Johnson's Janssen COVID-19 vaccine in some situations.

### Important Links for Vaccination:

- MA COVID-19 Vaccine Information: [www.mass.gov/info-details/massachusetts-covid-19-vaccine-information](http://www.mass.gov/info-details/massachusetts-covid-19-vaccine-information)
- Find a Vaccine Location, including boosters: [www.vaxfinder.mass.gov](http://www.vaxfinder.mass.gov)
- COVID-19 Vaccine frequently asked questions: [www.mass.gov/info-details/covid-19-vaccine-frequently-asked-questions](http://www.mass.gov/info-details/covid-19-vaccine-frequently-asked-questions)
- COVID-19 vaccine booster shots, ages 12+: [www.cdc.gov/coronavirus/2019-ncov/vaccines/booster-shot.html](http://www.cdc.gov/coronavirus/2019-ncov/vaccines/booster-shot.html)
- COVID-19 booster frequently asked questions: [www.mass.gov/info-details/covid-19-booster-frequently-asked-questions](http://www.mass.gov/info-details/covid-19-booster-frequently-asked-questions)
- Generate a COVID-19 digital vaccine card: [www.mass.gov/massachusetts-vaccination-records](http://www.mass.gov/massachusetts-vaccination-records)
- Request a copy of your vaccine record: [www.mass.gov/info-details/requesting-a-copy-of-your-covid-19-vaccination-record](http://www.mass.gov/info-details/requesting-a-copy-of-your-covid-19-vaccination-record)

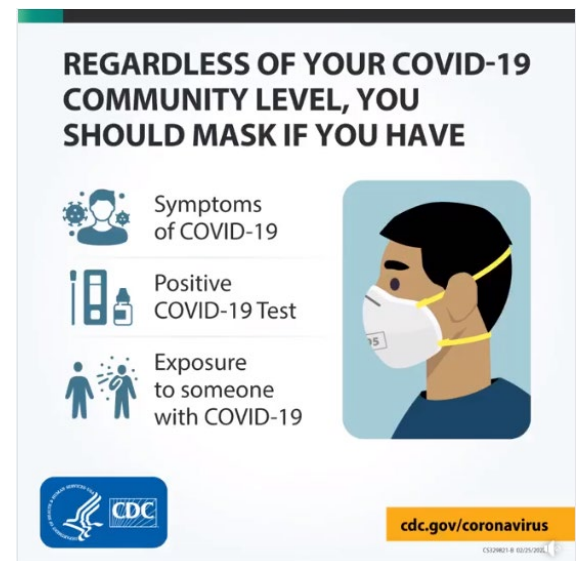
- [COVID-19 Mask Requirements](#)

### [Free N95 Respirators](#)

The Strategic National Stockpile has distributed N95 respirators to pharmacy distribution centers throughout the country. Click [here](#) to find free masks (N95 respirators) at a participating location near you. For information about how to use your N95 correctly, see [How to Use Your N95 Respirator](#).

### Important Links for Masks and Respirators:

- COVID-19 Mask Information: [www.mass.gov/info-details/covid-19-mask-information](http://www.mass.gov/info-details/covid-19-mask-information)
- Types of Masks and Respirators: [www.cdc.gov/coronavirus/2019-ncov/prevent-getting-sick/types-of-masks.html](http://www.cdc.gov/coronavirus/2019-ncov/prevent-getting-sick/types-of-masks.html)
- Your Guide to Masks: [www.cdc.gov/coronavirus/2019-ncov/prevent-getting-sick/about-face-coverings.html](http://www.cdc.gov/coronavirus/2019-ncov/prevent-getting-sick/about-face-coverings.html)
- Improve How Your Mask Protects You: [www.cdc.gov/coronavirus/2019-ncov/your-health/effective-masks.html](http://www.cdc.gov/coronavirus/2019-ncov/your-health/effective-masks.html)
- Types of Masks and Respirators: [www.cdc.gov/coronavirus/2019-ncov/prevent-getting-sick/types-of-masks.html](http://www.cdc.gov/coronavirus/2019-ncov/prevent-getting-sick/types-of-masks.html)
- Find Free Masks (N95 Respirators): [www.cdc.gov/coronavirus/2019-ncov/your-health/free-masks.html](http://www.cdc.gov/coronavirus/2019-ncov/your-health/free-masks.html)

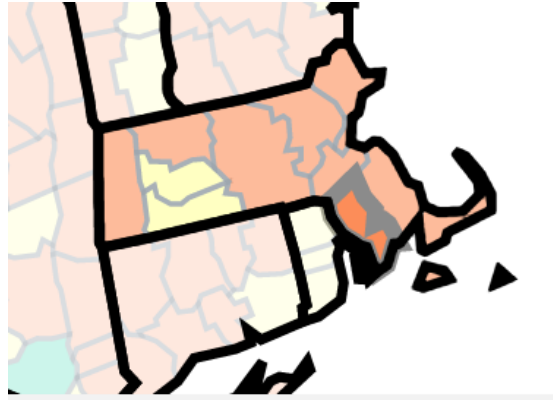


- [Bristol County COVID-19 Community Level is identified as HIGH](#)

[COVID-19 Community Levels](#) are a tool to help communities decide what prevention steps to take based on the latest data. Levels can be low, medium, or high and are determined by looking at hospital beds being used, hospital admissions, and the total number of new COVID-19 cases in an area. Take precautions to protect yourself and others from COVID-19 based on the COVID-19 Community Level in your area.

In **Bristol County**, community level is **HIGH**.

- Wear a mask indoors in public and on [public transportation](#). Stay [up to date](#) with COVID-19 vaccines.
- [Get tested](#) if you have symptoms.
- If you are at [high risk for severe illness](#), consider taking [additional precautions](#).



**COVID-19 Community Level designations throughout Massachusetts today:**

| County         | COVID-19 Community Level |
|----------------|--------------------------|
| Barnstable     | High                     |
| Berkshire      | High                     |
| <b>Bristol</b> | <b>High</b>              |
| Dukes          | High                     |
| Essex          | High                     |
| Franklin       | High                     |
| Hampden        | Medium                   |

| County    | COVID-19 Community Level |
|-----------|--------------------------|
| Hampshire | Medium                   |
| Middlesex | High                     |
| Nantucket | Medium                   |
| Norfolk   | High                     |
| Plymouth  | High                     |
| Suffolk   | High                     |
| Worcester | High                     |

**What Prevention Steps Should You Take Based on Your COVID-19 Community Level?**

| Community Burden Levels   |  |   |
|---|--|---|
| Low   | Medium   | High  |
| <ul style="list-style-type: none"> <li>• Stay <a href="#">up to date</a> with COVID-19 vaccines</li> <li>• <a href="#">Get tested</a> if you have symptoms</li> </ul> | <ul style="list-style-type: none"> <li>• If you are <a href="#">at high risk for severe illness</a>, talk to your healthcare provider about whether you need to wear a mask and take other precautions</li> <li>• Stay <a href="#">up to date</a> with COVID-19 vaccines</li> <li>• <a href="#">Get tested</a> if you have symptoms</li> </ul> | <ul style="list-style-type: none"> <li>• Wear a <a href="#">mask</a> indoors in public</li> <li>• Stay <a href="#">up to date</a> with COVID-19 vaccines</li> <li>• <a href="#">Get tested</a> if you have symptoms</li> <li>• Additional precautions may be needed for people <a href="#">at high risk for severe illness</a></li> </ul> |
| <p>People may choose to mask at any time. People with symptoms, a positive test, or exposure to someone with COVID-19 should wear a mask.</p>                         |  |   |

- [Isolation and Quarantine Guidance for the General Public](#)

**Important Links for Isolation and Quarantine:**

- Mansfield COVID information: [www.mansfieldma.com/601/Covid-Information](http://www.mansfieldma.com/601/Covid-Information)
- COVID-19 Isolation and Quarantine Guidance for the General Public: [www.mass.gov/info-details/covid-19-isolation-and-quarantine-guidance-for-the-general-public](http://www.mass.gov/info-details/covid-19-isolation-and-quarantine-guidance-for-the-general-public)
- How To Talk To Your Close Contacts: [www.cdc.gov/coronavirus/2019-ncov/daily-life-coping/tell-your-contacts.html](http://www.cdc.gov/coronavirus/2019-ncov/daily-life-coping/tell-your-contacts.html)
- Enable MassNotify on your smartphone: [www.mass.gov/info-details/enable-massnotify-on-your-smartphone](http://www.mass.gov/info-details/enable-massnotify-on-your-smartphone)

**The CDC has a new [COVID-19 Quarantine and Isolation \(Q&I\) Calculator](#)** which offers customized information to address each unique situation. It takes the stress out of figuring when, and for how long, people with COVID-19 and close contacts need to stay home, get tested, and wear a well-fitting mask. The calculator provides important information about what precautions people with COVID-19 and their close contacts can take to protect loved ones and prevent COVID-19 in their communities. This online, mobile-friendly calculator provides a simple, easy-to-use way to help people follow CDC's [Quarantine and Isolation](#) guidance and get customized information that applies to their unique situation.

To use the tool:

- People with COVID-19 who do not have symptoms need to know the date they were tested for COVID-19
- People with COVID-19 who have symptoms need to know the date their symptoms began
- Close contacts need to know the date they last came into close contact with someone with COVID-19

- [Treatments for COVID-19](#)

Treatment is available for people who are at increased risk of severe disease, test positive for COVID-19 and have any symptoms, even mild ones (such as runny nose or cough). The sooner you start treatment, the better.

- **Call your doctor right away** to learn about your treatment options, OR
- **Call (508) 213-1380** to speak with a Gothams representative. If you're eligible for COVID-19 treatment, they can schedule an infusion appointment for you at one of their 7 sites in Massachusetts. Gothams COVID-19 Self-Referral Treatment Line is open Monday–Saturday from 8 a.m. to 6 p.m.

- [Mansfield Public School COVID information and dashboard](#)

For information about the schools and COVID, please see their School Health and COVID Information webpage: <https://sites.google.com/mansfieldschools.com/covid-19/home>