

COMMUNITY UPDATE COVID-19

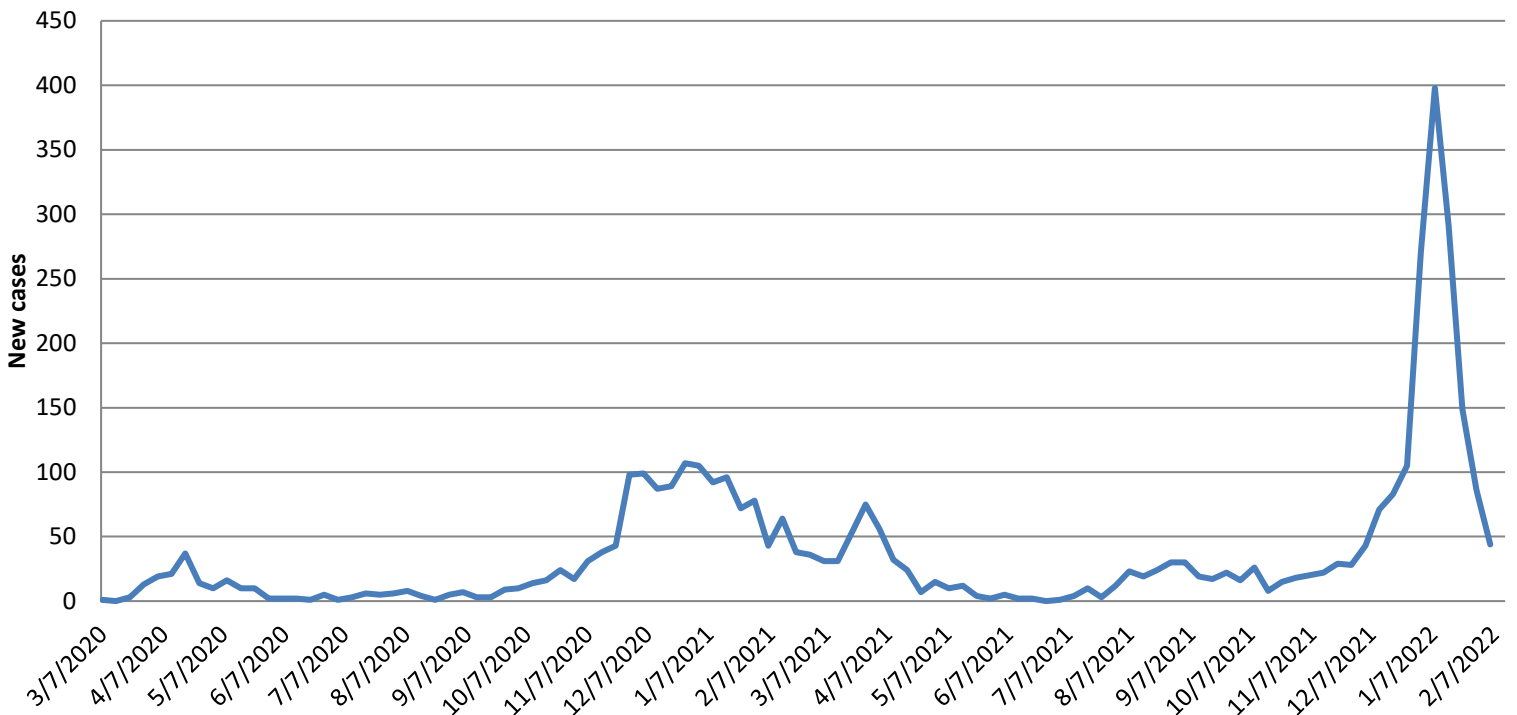
February 7, 2022:

The Town of Mansfield continues its community update on our website with our up to date information and important tips for the public as it relates to the COVID-19 pandemic. For more complete information, please see the town [coronavirus webpage](#).

- **As of today, please see the below chart that represents our communities COVID-19 relates cases:**

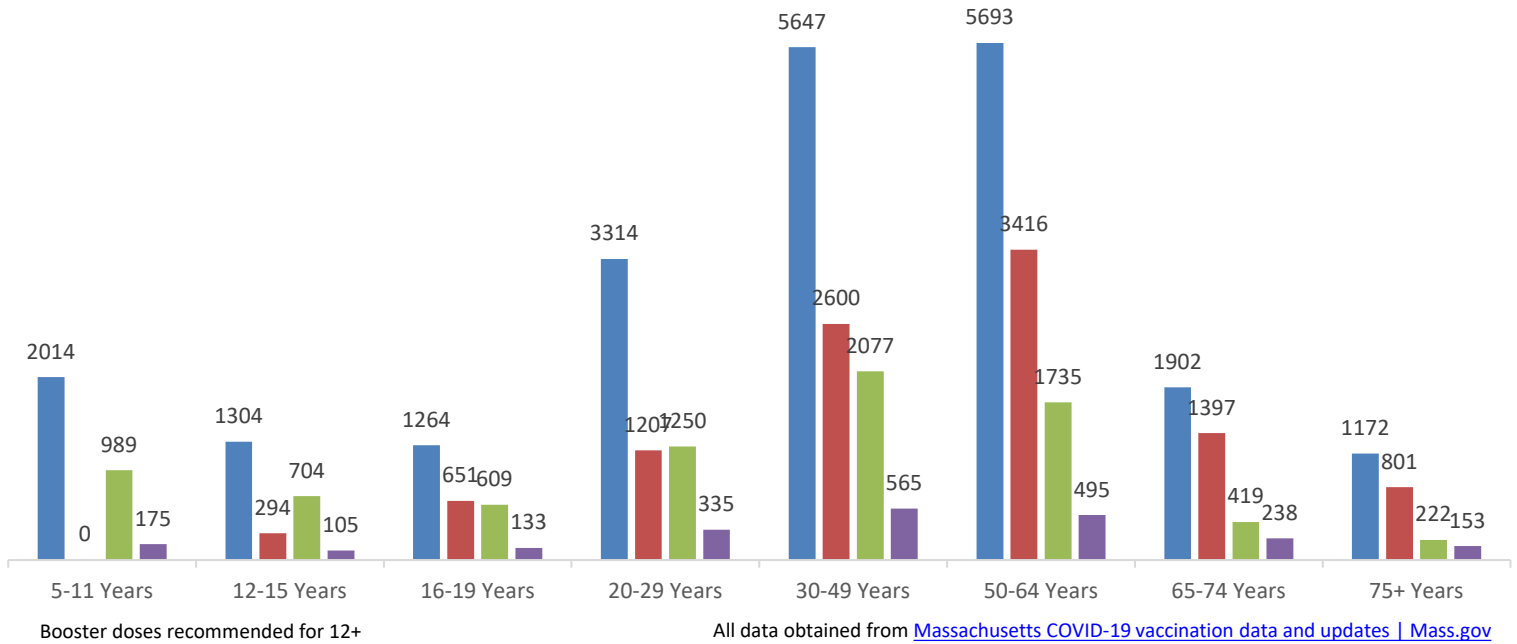
<i>Mansfield Covid-19 Workflow</i>	#	
Positive COVID-19 under isolation	45	(updated 02/07 08:00)
Positive Cases recovered	3964	
Total tested positive since beginning:	4040	
Covid-19 Related Deaths	31	Last Covid death in Mansfield 1/28/22

**New COVID-19 cases per week
March 7, 2020 - February 5, 2022**



Vaccine Distribution in Mansfield- data through February 1, 2022*

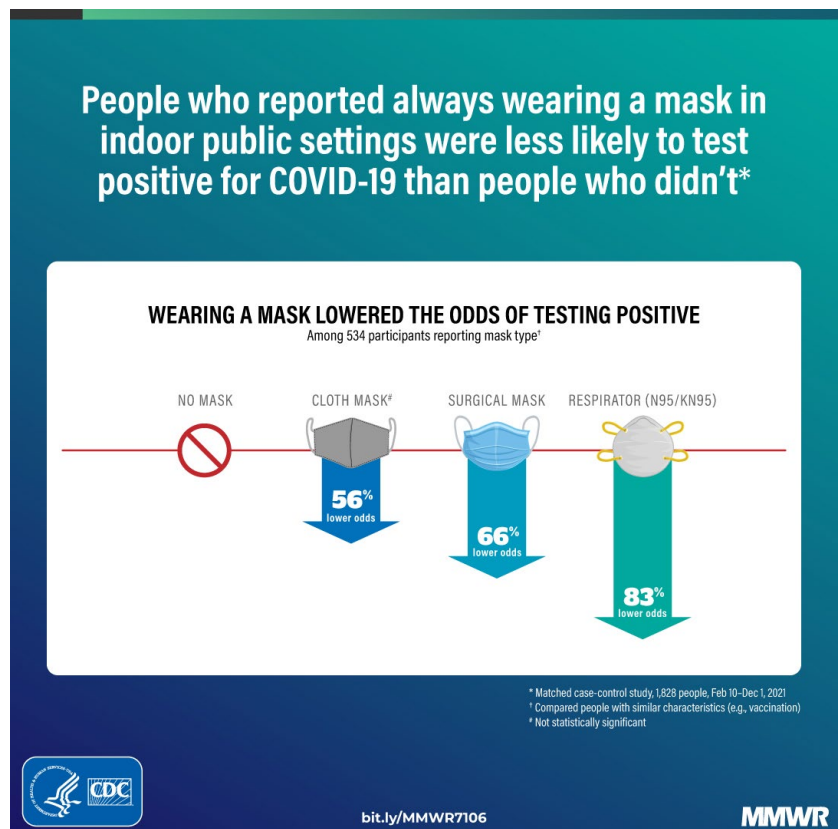
■ Population ■ Individuals with booster doses ■ Fully vaccinated individual, no booster ■ Partially vaccinated individuals



*The Centers for Disease Control and Prevention (CDC) now recommends that [Americans stay "up to date" with COVID-19 vaccines](#), rather than be "fully vaccinated." Up to date means a person has received all recommended COVID-19 vaccines, including any booster dose(s) when eligible. Fully vaccinated means a person has received their primary series of COVID-19 vaccines.

A new MMWR study shows that wearing a mask indoors helps protect against COVID-19. Compared with those who reported not wearing a face covering, people who reported always wearing one in indoor public settings were less likely to test positive for COVID-19. Respirators (N95/KN95) were most protective. Wear a mask in indoor public settings to help protect yourself and others from COVID-19.

Learn more. bit.ly/MMWR7106



- [Get Vaccinated Against COVID-19 for individuals age 5+](#)

Important Links for Vaccination:

- MA COVID-19 Vaccine Information: www.mass.gov/info-details/massachusetts-covid-19-vaccine-information
- Find a Vaccine Location, including boosters: www.vaxfinder.mass.gov
- COVID-19 Vaccine frequently asked questions: www.mass.gov/info-details/covid-19-vaccine-frequently-asked-questions
- COVID-19 vaccine booster shots, ages 12+: www.cdc.gov/coronavirus/2019-ncov/vaccines/booster-shot.html
- COVID-19 booster frequently asked questions: www.mass.gov/info-details/covid-19-booster-frequently-asked-questions
- Generate a COVID-19 digital vaccine card: www.MyVaxRecords.Mass.Gov
- Request a copy of your vaccine record: www.mass.gov/info-details/requesting-a-copy-of-your-covid-19-vaccination-record

- [Isolation and Quarantine Guidance for the General Public](#)

Important Links for Isolation and Quarantine:

- Mansfield COVID information: www.mansfieldma.com/601/Covid-Information
- COVID-19 Isolation and Quarantine Guidance for the General Public: www.mass.gov/info-details/covid-19-isolation-and-quarantine-guidance-for-the-general-public
- How To Talk To Your Close Contacts: www.cdc.gov/coronavirus/2019-ncov/daily-life-coping/tell-your-contacts.html
- Enable MassNotify on your smartphone: www.mass.gov/info-details/enable-massnotify-on-your-smartphone

- [Types of Masks and Respirators](#)

Due to the rapid rise in cases in the Town of Mansfield, the Mansfield Board of Health has enacted an emergency order requiring masks for all individuals aged two years and above in all indoor public spaces, places of worship, or private spaces open to the public except where an individual is unable to wear a face covering due to a medical condition or disability. This mandate will be in place until February 28, 2022. Additional information can be found on the Coronavirus webpage: [Coronavirus Information | Mansfield, MA \(mansfieldma.com\)](#)

- COVID-19 Mask Information: www.mass.gov/info-details/covid-19-mask-information
 - Your Guide to Masks: www.cdc.gov/coronavirus/2019-ncov/prevent-getting-sick/about-face-coverings.html
 - Improve How Your Mask Protects You: www.cdc.gov/coronavirus/2019-ncov/your-health/effective-masks.html
- Types of Masks and Respirators: www.cdc.gov/coronavirus/2019-ncov/prevent-getting-sick/types-of-masks.html

- [Public Health Advisory regarding COVID-19 Testing](#)

The Massachusetts Department of Public Health advises all residents to seek COVID-19 tests when exhibiting [COVID symptoms](#), or five days following a known close contact with someone diagnosed with COVID pursuant to MA DPH quarantine and isolation protocols, updated in accordance with the new CDC guidance.

Important Links for Testing:

- CDC’s online COVID-19 Viral Testing Tool: <https://bit.ly/covid-testing-tool>
- MA DPH COVID-19 Testing information: <https://www.mass.gov/covid-19-testing>
- Find a COVID-19 Test: <https://www.mass.gov/info-details/find-a-covid-19-test>
- Using a COVID-19 Self-Test: <https://www.mass.gov/info-details/using-a-covid-19-self-test>
- CDC COVID-19 Testing: <https://www.cdc.gov/coronavirus/2019-ncov/testing/index.html>
- Order free At-Home COVID-19 Tests: <https://special.usps.com/testkits>

- [Bristol county identified as an area of high transmission](#)

Bristol county has been identified by the CDC as an area of high transmission for COVID-19. The CDC recommends all people, no matter their vaccination status, wear masks indoors and in crowded outdoor settings in areas of substantial or high transmission. More information can be found [here](#).

County	COVID transmission level
Barnstable	High
Berkshire	High
Bristol	High
Dukes	High
Essex	High
Franklin	High
Hampden	High
Hampshire	High
Middlesex	High
Nantucket	High
Norfolk	High
Plymouth	High
Suffolk	High
Worcester	High

Bristol County, Massachusetts

State Health Department [↗](#)

7-day Metrics | [7-day Percent Change](#)

Community Transmission ● High

Everyone in **Bristol County, Massachusetts** should wear a mask in public, indoor settings. Mask requirements might vary from place to place. Make sure you follow local laws, rules, regulations or guidance.

[How is community transmission calculated?](#)

February 7, 2022

Cases	2,530
Case Rate per 100k	447.62
% Positivity	10.48%
Deaths	63
% of population ≥ 5 years of age fully vaccinated	67.1%
New Hospital Admissions	101

Data from [CDC COVID Data Tracker](#)

- [Mansfield Public School COVID information and dashboard](#)

For information about the schools and COVID, please see their School Health and COVID Information webpage: <https://sites.google.com/mansfieldschools.com/covid-19/home>