

COMMUNITY UPDATE COVID-19

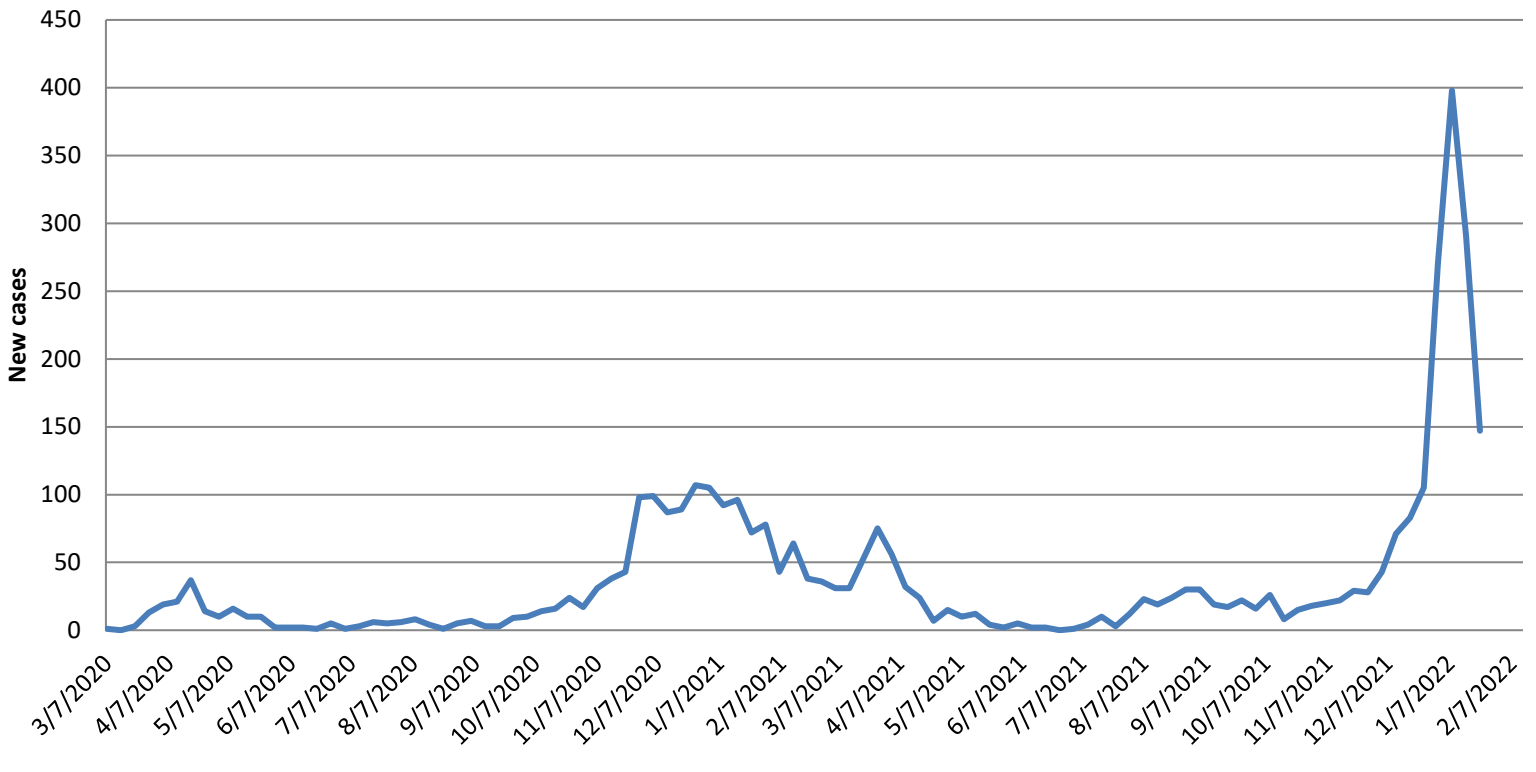
January 27, 2022:

The Town of Mansfield continues its community update on our website with our up to date information and important tips for the public as it relates to the COVID-19 pandemic. For more complete information, please see the town [coronavirus webpage](#).

- **As of today, please see the below chart that represents our communities COVID-19 relates cases:**

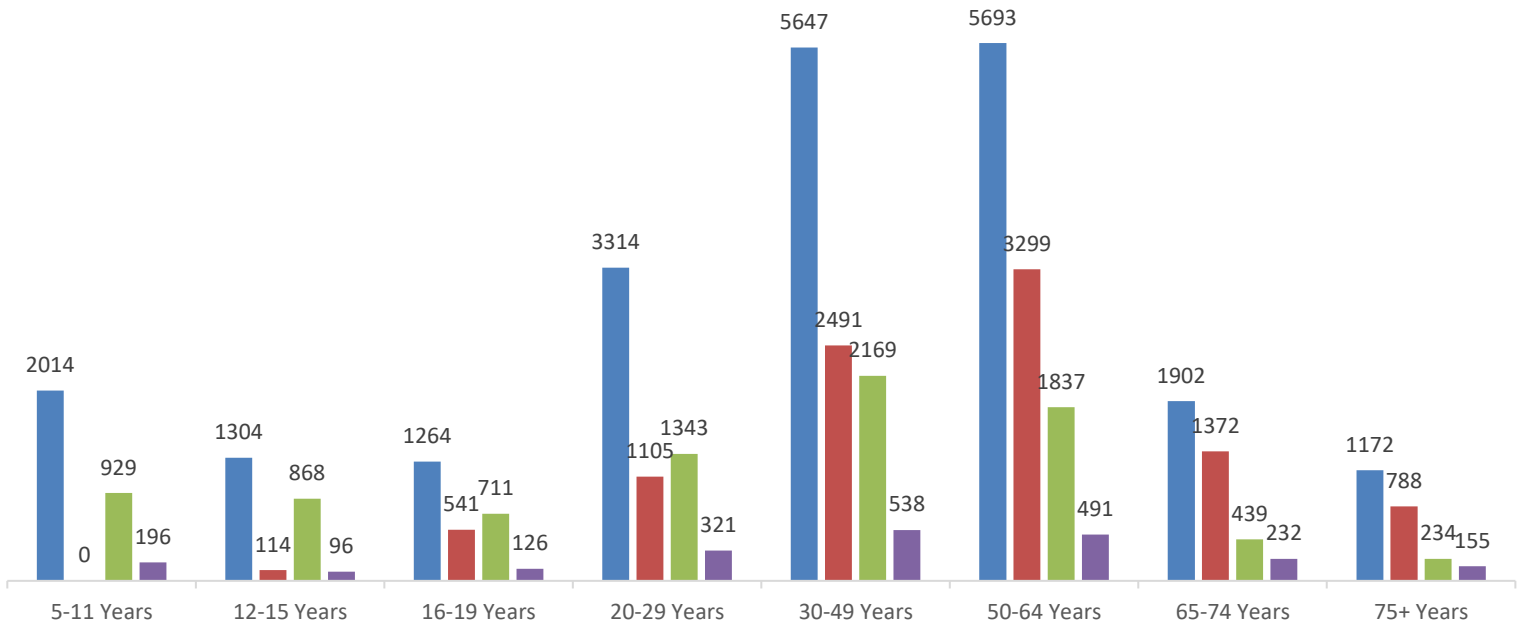
<i>Mansfield Covid-19 Workflow</i>	#	
Positive COVID-19 under isolation	146	(updated 01/27 08:00)
Positive Cases recovered	3743	
Total tested positive since beginning:	3919	
Covid-19 Related Deaths	30	Last Covid death in Mansfield 1/18/22

New COVID-19 cases per week March 7, 2020 - January 22, 2022



Vaccine Distribution in Mansfield- data through January 18, 2022*

■ Population ■ Individuals with booster doses ■ Fully vaccinated individual, no booster ■ Partially vaccinated individuals



Booster doses recommended for ages 12+

All data obtained from [Massachusetts COVID-19 vaccination data and updates | Mass.gov](https://www.mass.gov/info-details/massachusetts-covid-19-vaccination-data-and-updates)

*The Centers for Disease Control and Prevention (CDC) now recommends that [Americans stay "up to date" with COVID-19 vaccines](#), rather than be "fully vaccinated." Up to date means a person has received all recommended COVID-19 vaccines, including any booster dose(s) when eligible. Fully vaccinated means a person has received their primary series of COVID-19 vaccines.

- [Isolation and Quarantine Guidance for the General Public](#)

If you test positive for COVID-19, [it's important for you to tell your close contacts](#) that they may have been exposed to COVID-19 so they can [quarantine](#), [get tested](#), and wear a [well-fitting mask](#). If they are infected, they could spread COVID-19 starting 2 days before they have any symptoms or test positive. By letting your close contacts know they may have been exposed to COVID-19, you are helping to protect them and everyone around them. Someone is still considered a close contact even if they were wearing a mask while they were around you.

If you are a close contact of someone with COVID, follow the DPH quarantine recommendations based on your vaccination status and ability to wear a well-fitting mask consistently and correctly. Regardless of vaccination status, all close contacts should avoid people who are at high risk of severe disease for 10 days.

Addition information about isolation and quarantine can be found at [Covid Information | Mansfield, MA \(mansfieldma.com\)](#) and at [COVID-19 Isolation and Quarantine Guidance for the General Public | Mass.gov](#)

MassNotify is a tool that works through smartphones, with a focus on privacy, to alert users who may have been exposed to COVID-19. You can enable MassNotify on your iPhone or Android phone

to add another tool to our fight against the spread of COVID-19. Click here for more information: [Enable MassNotify on your smartphone | Mass.gov](#)

- [Types of Masks and Respirators](#)

Due to the rapid rise in cases in the Town of Mansfield, the Mansfield Board of Health has enacted an emergency order requiring masks for all individuals aged two years and above in all indoor public spaces, places of worship, or private spaces open to the public except where an individual is unable to wear a face covering due to a medical condition or disability. This mandate will be in place until February 28, 2022. Additional information can be found on the Coronavirus webpage: [Coronavirus Information | Mansfield, MA \(mansfieldma.com\)](#)

Correct and consistent [mask use](#) is a critical step everyone can take to prevent getting and spreading COVID-19. Masks work best when everyone wears them, but not all masks provide the same protection. When choosing a mask, look at how well it fits, how well it filters the air, and how many layers it has.

- [Public Health Advisory regarding COVID-19 Testing](#)

The Massachusetts Department of Public Health advises all residents to seek COVID-19 tests when exhibiting [COVID symptoms](#), or five days following a known close contact with someone diagnosed with COVID pursuant to MA DPH quarantine and isolation protocols, updated in accordance with the new CDC guidance.

Important Links for Testing:

- CDC's online COVID-19 Viral Testing Tool: <https://bit.ly/covid-testing-tool>
- MA DPH COVID-19 Testing information: <https://www.mass.gov/covid-19-testing>
- Find a COVID-19 Test: <https://www.mass.gov/info-details/find-a-covid-19-test>
- Using a COVID-19 Self-Test: <https://www.mass.gov/info-details/using-a-covid-19-self-test>
- CDC COVID-19 Testing: <https://www.cdc.gov/coronavirus/2019-ncov/testing/index.html>

Every home in the U.S. is eligible to order 4 free at-home COVID-19 tests. The tests are completely free. Orders will usually ship in 7-12 days.

Order your tests now so you have them when you need them. Click here: [Place Your Order for Free At-Home COVID-19 Tests](#)

Residential households in the U.S. can order one set of 4 free at-home tests from USPS.com. Here's what you need to know about your order:

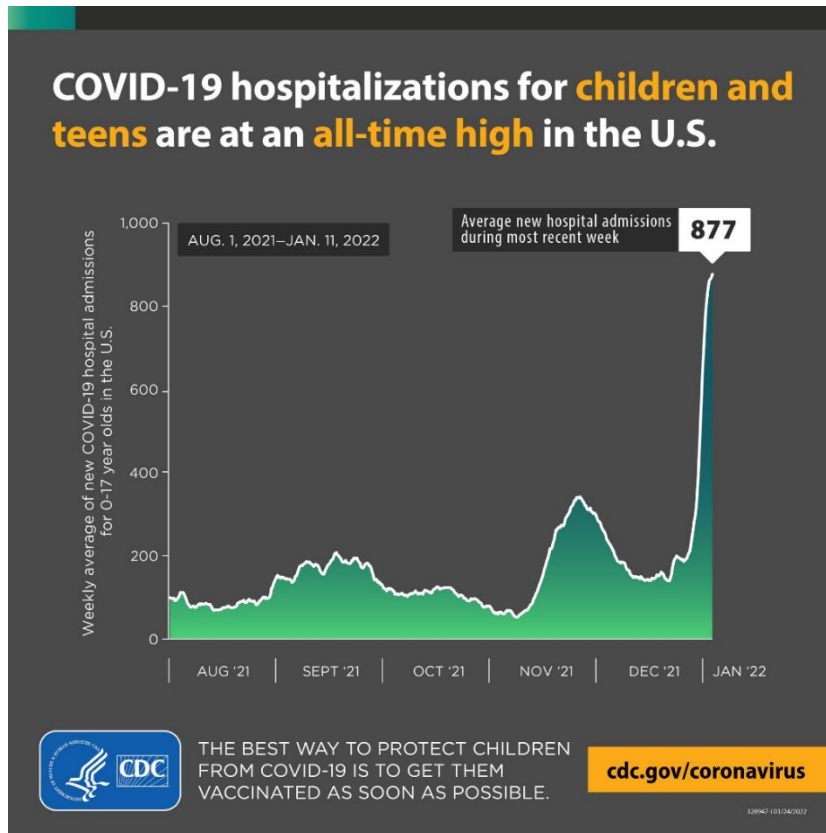
- Limit of one order per residential address
- One order includes 4 individual rapid antigen COVID-19 tests
- Orders will ship free starting in late January



- [Get Vaccinated Against COVID-19 for individuals age 5+](#)

Important Links for Vaccination:

- MA COVID-19 Vaccine Information: www.mass.gov/info-details/massachusetts-covid-19-vaccine-information
- Find a Vaccine Location, including boosters: www.vaxfinder.mass.gov
- COVID-19 Vaccine frequently asked questions: www.mass.gov/info-details/covid-19-vaccine-frequently-asked-questions
- COVID-19 vaccine booster shots, ages 12+: www.cdc.gov/coronavirus/2019-ncov/vaccines/booster-shot.html
- COVID-19 booster frequently asked questions: www.mass.gov/info-details/covid-19-booster-frequently-asked-questions
- Generate a COVID-19 digital vaccine card: www.MyVaxRecords.Mass.Gov
- Request a copy of your vaccine record: www.mass.gov/info-details/requesting-a-copy-of-your-covid-19-vaccination-record



Getting your child vaccinated against COVID-19 is more important than ever. Vaccination helps protect children from severe illness, hospitalization, and death from COVID-19.

CDC recommends everyone ages 5 years and older get a COVID-19 vaccine and everyone ages 12 and older get a booster dose when eligible.

Find a vaccine near you: : www.vaxfinder.mass.gov

- [Mansfield Public School COVID information and dashboard](#)

For information about the schools and COVID, please see their School Health and COVID Information webpage: <https://sites.google.com/mansfieldschools.com/covid-19/home>

For more information about how to keep kids safe in school: [School Settings | COVID-19 | CDC](#)

- [Bristol county identified as an area of high transmission](#)

Bristol county has been identified by the CDC as an area of high transmission for COVID-19. The CDC recommends all people, no matter their vaccination status, wear masks indoors and in crowded outdoor settings in areas of substantial or high transmission. More information can be found [here](#).

County	COVID transmission level
Barnstable	High
Berkshire	High
Bristol	High
Dukes	High
Essex	High
Franklin	High
Hampden	High
Hampshire	High
Middlesex	High
Nantucket	High
Norfolk	High
Plymouth	High
Suffolk	High
Worcester	High

Bristol County, Massachusetts

[State Health Department](#) 

7-day Metrics | [7-day Percent Change](#)

Community Transmission ● High

Everyone in **Bristol County, Massachusetts** should wear a mask in public, indoor settings. Mask requirements might vary from place to place. Make sure you follow local laws, rules, regulations or guidance.

How is community transmission calculated?

January 27, 2022

Cases	7,154
Case Rate per 100k	1,265.71
% Positivity	19.36%
Deaths	84
% of population ≥ 5 years of age fully vaccinated	66.5%
New Hospital Admissions	229

Data from [CDC COVID Data Tracker](#)



STAYING PROTECTED AGAINST COVID-19

Getting vaccinated is the best way to stay protected against this virus - by reducing the risk of severe infection and hospitalization.

To protect yourself, the CDC recommends that everyone, including vaccinated individuals, wear a mask indoors in public if they are in an area of substantial or high transmission.

To learn more visit www.cdc.gov/coronavirus

ACADEMIC PUBLIC HEALTH CORPS

Created by: Amanda DiPietro
Last update: 01/10/2022