

COMMUNITY UPDATE COVID-19

September 1, 2021:

The Town of Mansfield continues its community update on our website with our up to date information and important tips for the public as it relates to the COVID-19 pandemic. For more complete information, please see the town [coronavirus webpage](#).

- **As of today, please see the below chart that represents our communities COVID-19 relates cases:**

| <i>Mansfield Covid-19 Workflow</i> | # | |
|--|------|--|
| Positive COVID-19 under isolation | 35 | (updated 9/1 08:00) |
| Positive Cases recovered | 1948 | |
| Total tested positive since beginning: | 2007 | |
| Covid-19 Related Deaths | 24 | Last Covid death in Mansfield 04/21/21 |

- [Daily Activities](#)

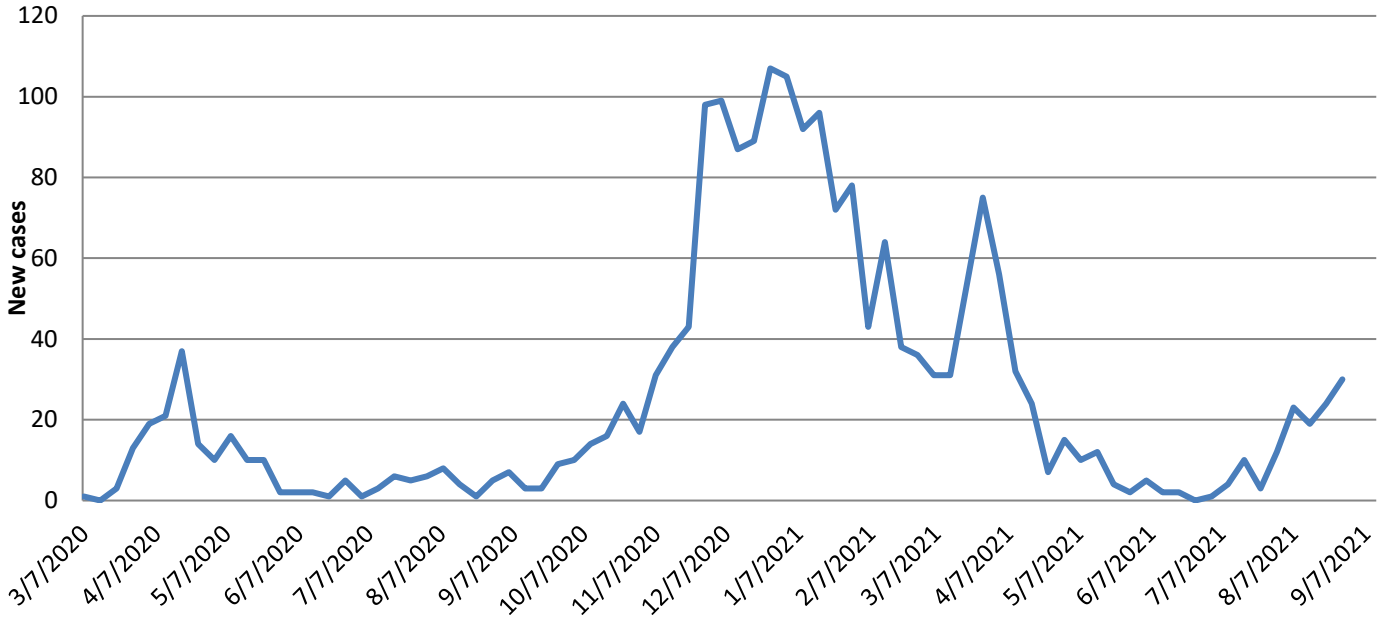
If you are [fully vaccinated](#), you can resume many of the activities you did before the pandemic. Even if you are fully vaccinated, you can become infected with the Delta variant and you can spread the virus to others. To reduce the risk of being infected with the Delta variant and possibly spreading it to others, if you are in an area of [substantial or high transmission](#) wear a mask indoors in public.

If you are not fully vaccinated, continue to take steps to [protect yourself](#):

- [Get vaccinated](#).
- [Wear a mask](#).
- Stay 6 feet away from others.
- Avoid crowds and poorly ventilated spaces.

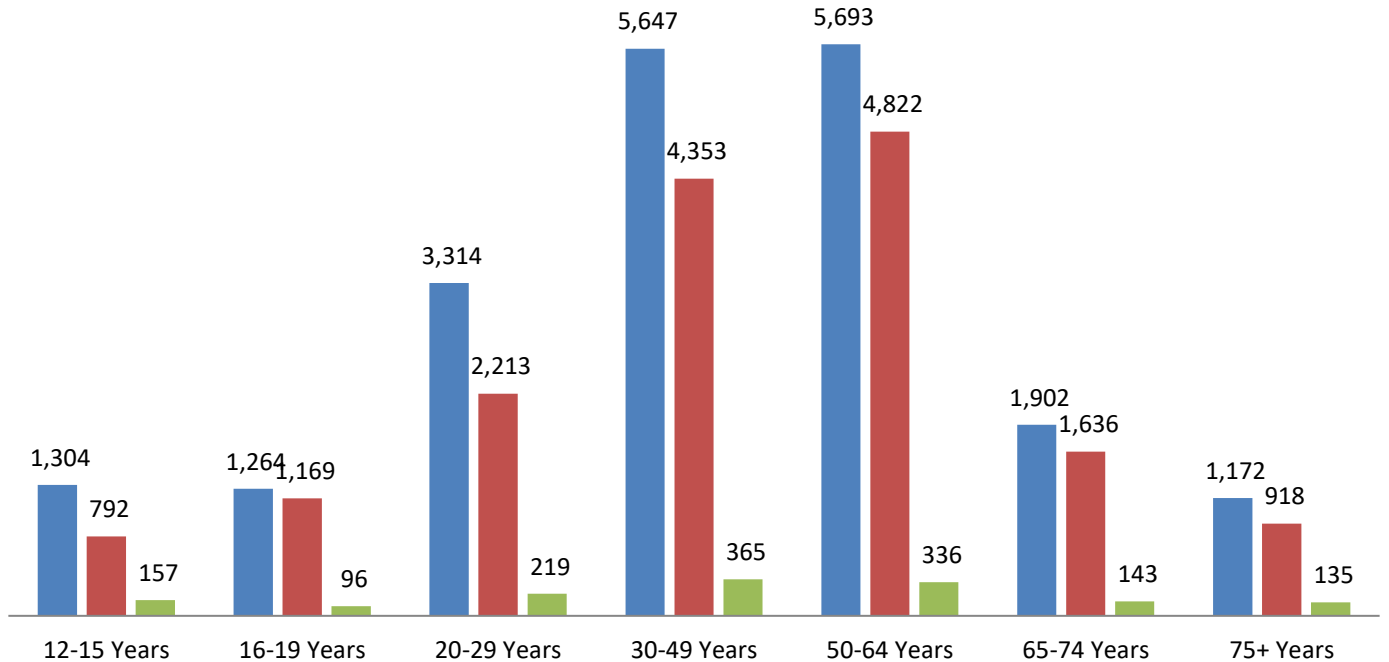


New COVID-19 cases per week March 7, 2020 - August 28, 2021



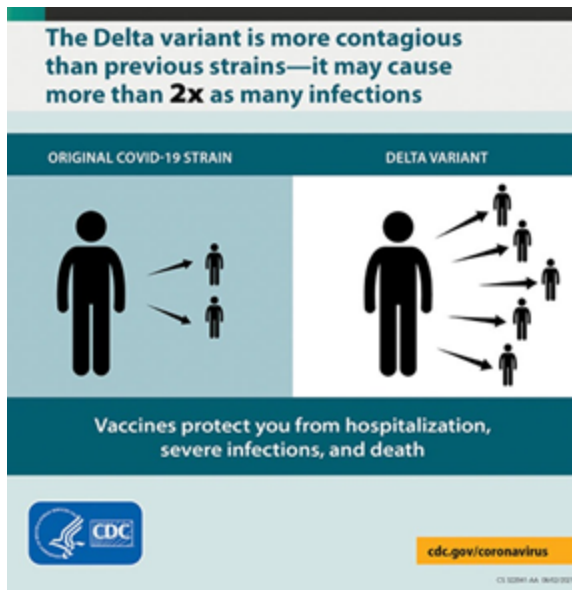
Vaccine Distribution in Mansfield as of August 26, 2021

■ Population
 ■ Fully vaccinated individuals
 ■ Partially vaccinated individuals



* vaccine use is currently only approved for ages 12 and above

- [Delta Variant: What we know about the Science](#)



CDC released [updated guidance](#) on the need for urgently increasing COVID-19 vaccination coverage and a recommendation for everyone in areas of [substantial or high transmission](#) to wear a mask in public indoor places, even if fully vaccinated.

This new guidance is in response to a rapid and alarming rise in COVID-19 cases and hospitalizations around the country, reversing a steady decline since January 2021.

New data has also emerged showing that the Delta variant is more infectious and spreads more easily than other variants, even among some vaccinated individuals.

- [Stay home if you are sick](#)

[If you have COVID-19](#), have [symptoms](#) consistent with COVID-19, or have been in [close contact](#) with someone who has COVID-19, know when to [quarantine](#) and [get tested](#).

If you are fully vaccinated

- Get tested 3-5 days following the exposure to someone with suspected or confirmed COVID-19.
- Wear a mask in public indoor settings for 14 days or until you receive a negative test result.
- You do not need to quarantine unless you develop symptoms.

If you are not fully vaccinated

- Stay home for 14 days after your last contact with a person who has COVID-19.
- Get tested and monitor your health for [symptoms of COVID-19](#).

- [Testing for COVID-19](#)

Testing is our best tool to identify those who have been exposed and slow the uptick in cases. Anyone experiencing even mild symptoms should get tested, as well as anyone who has had a close contact with an individual who has tested positive for COVID-19. Testing is encouraged regardless of vaccination status. <https://www.mass.gov/covid-19-testing>

- [Bristol County identified as an area of high transmission](#)

Bristol County has been identified by the CDC as an area of high transmission for COVID-19. The CDC recommends all people, no matter their vaccination status, wear masks indoors and in crowded outdoor settings in areas of substantial or high transmission. More information can be found [here](#). Within Massachusetts, county designation is the following:

| County | COVID transmission level |
|------------|--------------------------|
| Barnstable | High |
| Berkshire | High |
| Bristol | High |
| Dukes | High |
| Essex | High |
| Franklin | Substantial |
| Hampden | High |

| County | COVID transmission level |
|-----------|--------------------------|
| Hampshire | High |
| Middlesex | High |
| Nantucket | High |
| Norfolk | High |
| Plymouth | High |
| Suffolk | High |
| Worcester | High |

- [Get Vaccinated Against COVID-19 for individuals age 12+](#)

People age 12+ who live, work or study in Massachusetts can be vaccinated. Sign up and be notified of appointments near you. Use [VaxFinder.mass.gov](https://vaxfinder.mass.gov) to search for appointments at pharmacies, health care providers, and other community locations.

Council on Aging staff is available to assist any vaccine-eligible seniors who need help navigating the scheduling process. Please call 508-261-7368.