

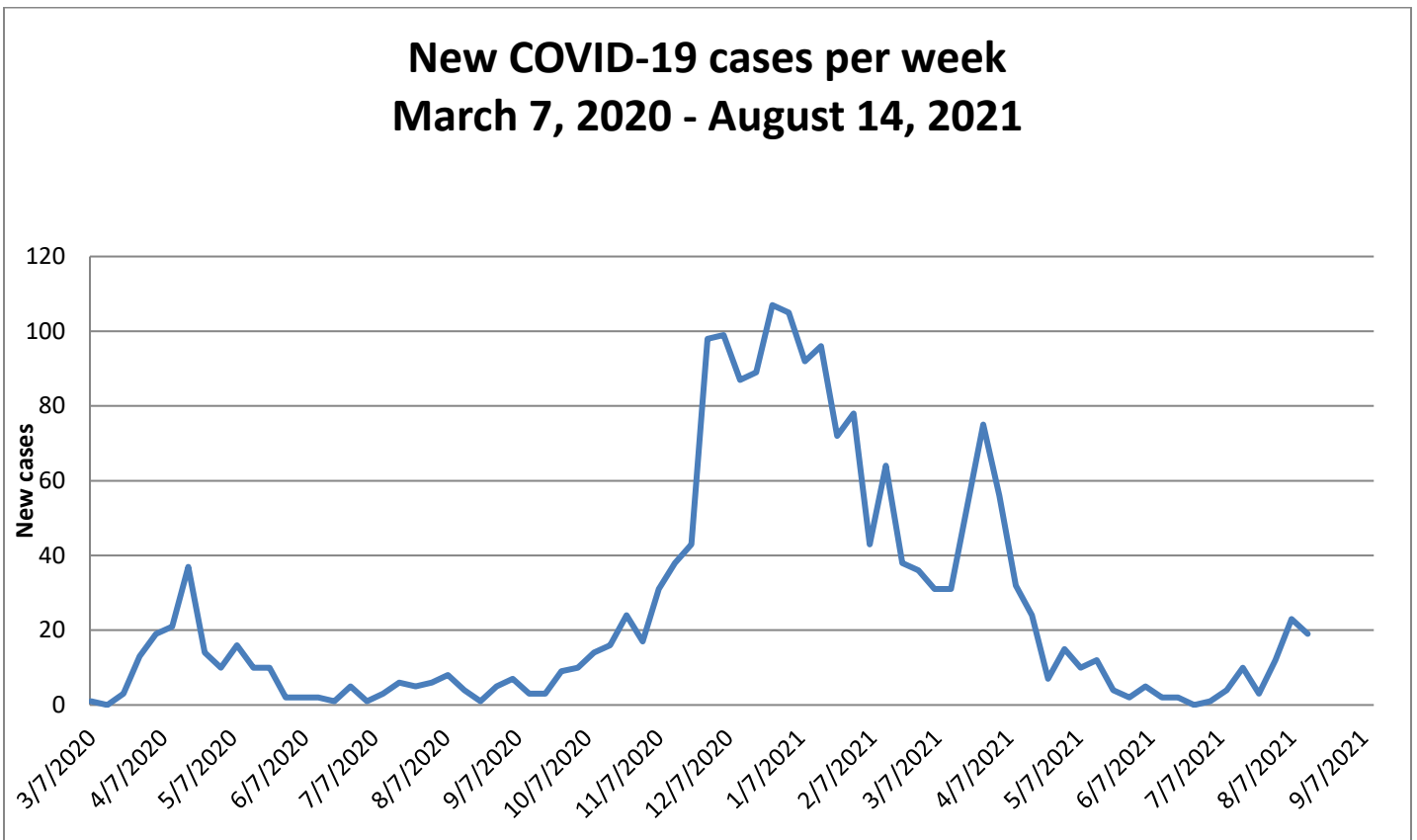
COMMUNITY UPDATE COVID-19

August 18, 2021:

The Town of Mansfield continues its community update on our website with our up to date information and important tips for the public as it relates to the COVID-19 pandemic. For more complete information, please see the town [coronavirus webpage](#).

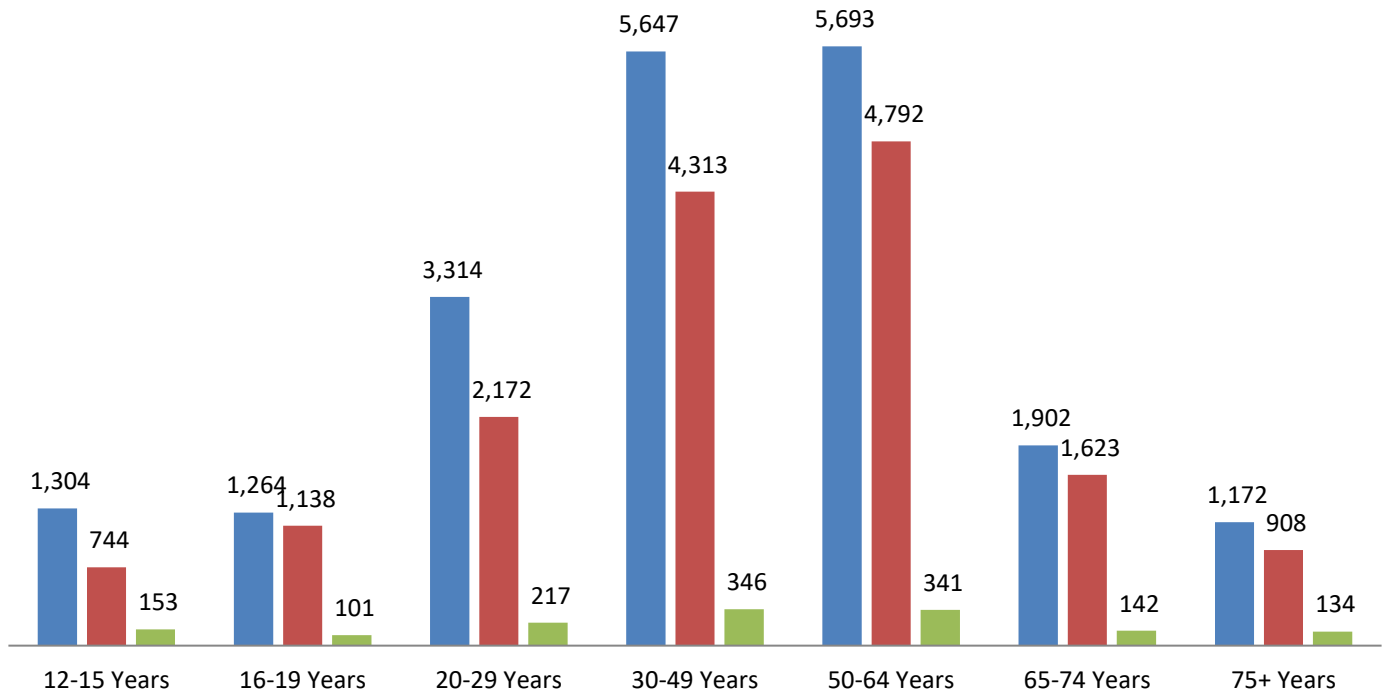
- **As of today, please see the below chart that represents our communities COVID-19 relates cases:**

<i>Mansfield Covid-19 Workflow</i>	#	
Positive COVID-19 under isolation	29	(updated 8/18 08:00)
Positive Cases recovered	1889	
Total tested positive since beginning:	1942	
Covid-19 Related Deaths	24	Last Covid death in Mansfield 04/21/21



Vaccine Distribution in Mansfield as of August 12, 2021

■ Population ■ Fully vaccinated individuals ■ Partially vaccinated individuals



- [Bristol County identified as an area of high transmission](#)

Bristol County has been identified by the CDC as an area of high transmission for COVID-19. The CDC recommends all people, no matter their vaccination status, wear masks indoors and in crowded outdoor settings in areas of substantial or high transmission. More information can be found [here](#). Within Massachusetts, counties designation is the following:

County	COVID transmission level
Barnstable	Substantial
Berkshire	High
Bristol	High
Dukes	High
Essex	High
Franklin	Substantial
Hampden	High

County	COVID transmission level
Hampshire	Substantial
Middlesex	High
Nantucket	High
Norfolk	Substantial
Plymouth	High
Suffolk	High
Worcester	Substantial

- [Get Vaccinated Against COVID-19 for individuals age 12+](#)

People age 12+ who live, work or study in Massachusetts can be vaccinated. Sign up and be notified of appointments near you. Use [VaxFinder.mass.gov](https://vaxfinder.mass.gov) to search for appointments at pharmacies, health care providers, and other community locations.

Council on Aging staff is available to assist any vaccine-eligible seniors who need help navigating the scheduling process. Please call 508-261-7368.

- [COVID-19 Vaccines for Moderately to Severely Immunocompromised People](#)

People who are moderately to severely immunocompromised are especially vulnerable to COVID-19 because they are more at risk of serious, prolonged illness. [Studies](#) indicate some immunocompromised people don't always build the same level of immunity after vaccination the way non-immunocompromised people do.

CDC recommends that people with moderately to severely compromised immune systems receive an additional dose of mRNA COVID-19 vaccine at least 28 days after a second dose of [Pfizer-BioNTech COVID-19 vaccine](#) or [Moderna COVID-19 vaccine](#).



Federal health officials have developed a plan to begin offering COVID-19 vaccine booster shots this fall, pending final FDA evaluation of third doses of the Pfizer and Moderna mRNA vaccines and formal recommendations from CDC's Advisory Committee on Immunization Practices (ACIP).

Read full joint statement: <https://bit.ly/3sA6rg7>.

- [Get Tested MA!](#)

Should I be tested?

You should get a test for COVID-19 if:

- You develop *any* symptoms of COVID-19, even if they are mild, **or**
- You are a close contact of someone who has tested positive for COVID-19

If you are a resident of a community at higher risk for COVID-19 spread, you are encouraged to get a COVID-19 test even if you have no symptoms. See a list of communities and learn more at www.mass.gov/StopTheSpread.

What are the symptoms of COVID-19?

If you develop symptoms of COVID-19, even if they are mild, please contact your healthcare provider and a test site near you to schedule a test. You can also [check your symptoms online](#). Symptoms may appear 2-14 days after exposure to the virus and may include:

- Fever, chills or shaking chills
- Signs of a lower respiratory illness (e.g., cough, shortness of breath, lowered oxygen saturation)
- Fatigue, sore throat, headache, body aches/myalgia, or new loss of sense of taste or smell
- Other less common symptoms can include gastrointestinal symptoms (e.g. nausea, vomiting, diarrhea), rash, and inflammatory conditions such as “COVID toes”.
- In elderly, chronically ill, or debilitated individuals such as residents of a long-term care facility, symptoms of COVID-19 may be subtle such as alterations in mental status or in blood glucose control

How do I know if I am a close contact of someone with COVID-19?

- You are a close contact of a COVID-19 positive person if you were within 6 feet of them while indoors, for at least 15 minutes, while they were symptomatic or within the 48 hours before symptom onset.
- You are also a close contact if you were within 6 feet for at least 15 minutes of someone while indoors, who tested positive for COVID-19 in the 48 hours before their test was taken or anytime in the 10 days after the test.
- According to CDC guidance, individuals are less likely to be exposed to COVID-19 during outdoor activities, even without the use of masks.

Where can I get a test?

Visit [Find a COVID-19 Test](#) to search for a testing site near you.

Many sites may require pre-screening, a referral and/or an appointment. **Please contact the site prior to arrival.** Learn about the free drive-through [Express COVID-19 Testing Sites in Massachusetts](#).

Is there a cost?

COVID-19 testing for symptomatic individuals and close contacts is usually covered by insurance and available at no cost to you.

Additionally, many test sites in the Commonwealth test uninsured individuals for free. If you are uninsured, please call your local test site to confirm before making an appointment.

What do I do if my test is positive?

If you test positive for COVID-19, we're here to help. It can take a few days to get your test results and while you are waiting, you should stay home and limit your contact with anyone else. [Learn more about quarantining.](#)

When you get your results, a provider will contact you and talk with you about next steps.

Here's what you need to know:

➤ **Stay home except to get medical care**

- **Stay home.** Most people with COVID-19 have mild illness and can recover at home without medical care. Do not leave your home, except to get medical care. Do not visit public areas.
- **Self-isolation** means separating yourself from others to keep your germs from spreading.
 - [How to Self-isolate](#)
 - [CDC Isolation Guidance](#)
 - If you have questions about isolation or quarantine, you can call the Health Department at 508-261-7366 or the Department of Public Health's On-call Epidemiologists at 617-983-6800.

➤ **Monitor your symptoms**

- Follow the advice of your doctor or local health department. If you feel like you need medical care, call ahead before visiting your doctor.
- Look for **emergency warning signs*** for COVID-19. If someone is showing any of these signs, **call 9-1-1** to seek emergency medical care immediately:
 - Trouble breathing
 - Persistent pain or pressure in the chest
 - New confusion
 - Inability to wake or stay awake
 - Bluish lips or face

*This list is not all possible symptoms. Please call your medical provider for any other symptoms that are severe or concerning to you.

➤ **Notify your close contacts**

A **close contact** is someone with whom you have been within 6 feet of for at least 10-15 minutes while symptomatic or within 48 hours before symptom onset. A close contact can also be someone who had direct contact with the droplets of a COVID-19 case (e.g., being coughed on) while not wearing a mask or face covering.

- Call your close contacts to notify them of your positive result if you are comfortable doing so

- Suggest they stay home and limit contact with anyone else and they will be contacted by public health
- Encourage them to get tested at a [COVID-19 Testing Site](#)

➤ **Answer the call from contact tracers**

- You may get a call from a contact tracer with your local Board of Health or the [MA COVID Team](#). Answer the call so they can reach out to people who have been in close contact with you and provide them with resources. It's the best way to protect your family, friends and community.
- The phone calls may indicate the call is from your local Board of Health or will use the prefix 833 and 857 and your phone will say the call is from "MA COVID Team."

COVID-19 TESTING IF YOU ARE VACCINATED

| COVID-19 |

You did your part by getting vaccinated, but you still have an important role to play in stopping this pandemic.

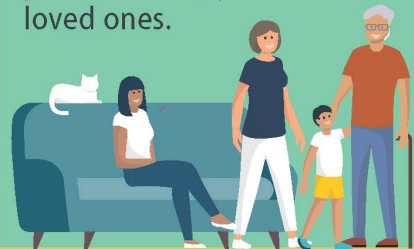
Even though it's rare, some people who are vaccinated still get COVID-19.



So, if you have symptoms, especially if you've been around someone with COVID-19, you should get tested.



By getting tested you protect the people around you, including your loved ones.



Encourage your friends and family to get vaccinated.

Remember, if you feel sick, get tested.



www.cdc.gov/covidtesting

- [Enable MassNotify on your smartphone](#)

MassNotify is a new tool that works through smartphones, with a focus on privacy, to alert users who may have been exposed to COVID-19. You can enable MassNotify on your iPhone or Android phone to add another tool to our fight against the spread of COVID-19 and help Massachusetts reopen safely.

[Learn how to enable MassNotify on your phone.](#)

- [Deadline to Register for the VaxMillions Giveaway is tomorrow](#)

Get fully vaccinated and register for the last VaxMillions Giveaway drawing this week by visiting [VaxMillionsGiveaway.com](#).

Vaccination appointments are available throughout the Commonwealth. This includes single-dose vaccines.

You can't play if you're not vaccinated. Don't miss your shot at \$1 million or a college scholarship.

Book your appointment today by visiting [vaxfinder.mass.gov](#)

Register to win at [vaxmillionsgiveaway.com](#)

Registration Closes	Drawing Date	Announcement Date
August 19	August 23	August 26

Only use [VaxMillionsGiveaway.com](#) to register. Learn more about how to protect yourself from lottery scams by visiting [mass.gov/vaxmillionshelp](#).