

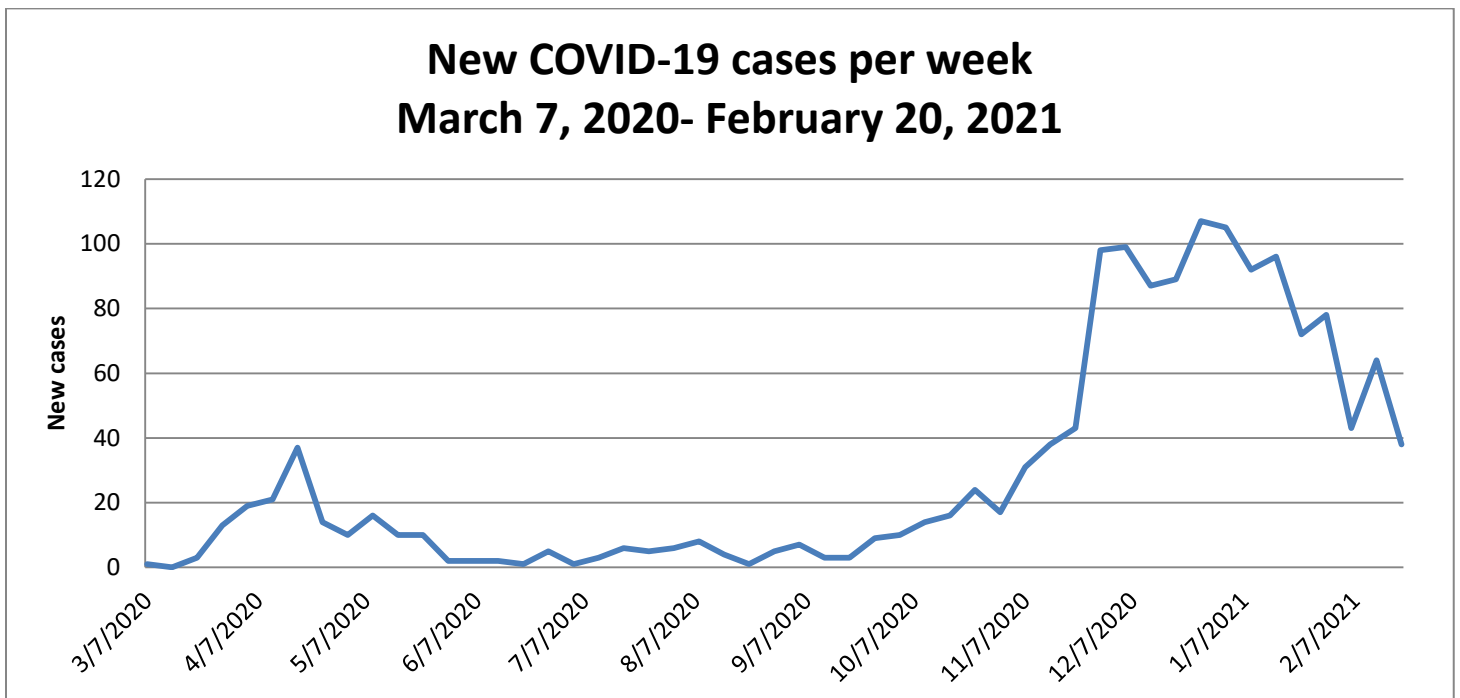
COMMUNITY UPDATE COVID-19

February 26, 2021:

The Town of Mansfield continues its community update on our website with our up to date information and important tips for the public as it relates to the COVID-19 pandemic. For more complete information, please see the town [coronavirus webpage](#).

- **As of today, please see the below chart that represents our communities COVID-19 relates cases:**

<i>Mansfield Covid-19 Workflow</i>	#	
Positive COVID-19 under isolation	53	(updated 2/26 08:00)
Positive Cases recovered	1370	
Total tested positive since beginning:	1445	
Mansfield Community Designation Level	Yellow	Red-higher risk Yellow- moderate risk Green- lower risk
Covid-19 Related Deaths	22	Last Covid death in Mansfield 01/15/21



- [What to Do if You Are Sick](#)

If you have a fever, cough or [other symptoms](#), you might have COVID-19. Most people have mild illness and are able to recover at home. If you think you may have been exposed to COVID-19, contact your healthcare provider.

- Keep track of your symptoms.
- **If you have [an emergency warning sign](#) (including trouble breathing), get emergency medical care immediately.**

- **Steps to help prevent the spread of COVID-19 if you are sick**

[If you are sick with COVID-19 or think you might have COVID-19](#), follow the steps below to care for yourself and to help protect other people in your home and community.

- Stay home except to get medical care.
- Separate yourself from other people.
- Tell your [close contacts](#) that they may have been exposed to COVID-19.
- Monitor your symptoms.
- Call ahead before visiting your doctor.
- If you are sick, wear a mask over your nose and mouth. You should wear a [mask](#) over your nose and mouth if you must be around other people, including pets (even at home).
- Cover your coughs and sneezes.
- Clean your hands often.
- Avoid sharing personal household items.
- Clean all “high-touch” surfaces everyday.

When can you be around others after being sick with COVID-19? Deciding when you can be around others is different for different situations. Find out when you can [safely end home isolation](#).

[Is it COVID-19 or Flu?](#) Some of the symptoms of flu and COVID-19 are similar, making it hard to tell the difference between them based on symptoms alone. Diagnostic testing can help determine if you are sick with the flu or COVID-19. [The Difference and Similarities between Flu and COVID-19](#)

- **Phase 3, Step 2 Starting Monday, March 1st**

Phase 3, Step 2: Effective March 1st, the Commonwealth will move forward into Phase 3, Step 2. This will reopen:

- Indoor performance venues such as concert halls, theaters, and other indoor performance spaces

- Open at 50% capacity with 500 person max
- Indoor recreational activities with greater potential for contact: laser tag, roller skating, trampolines, obstacle courses
 - Open at 50% capacity

Updated Capacity Limits: Effective March 1st the following industries will increase to 50% capacity. Employees will be exempt from capacity restrictions in ***all*** of these industries:

- Arcades & Other Indoor and Outdoor Recreation Businesses
- Close Contact Personal Services
- Driving and Flight Schools
- Fitness Centers and Health Clubs
- Golf Facilities (indoor)
- Libraries
- Operators of Lodging (common spaces)
- Museums, Cultural & Historic Facilities, Guided Tours
- Office Spaces
- Places of Worship
- Sectors not Otherwise Addressed
- Theaters and Performance Venues
- Relevant EEA Industries – Youth sports spectators etc.
- *The following industries remain unaffected by capacity limits:*
 - Drive in movie theaters
 - Construction
 - Laboratories
 - Manufacturing

Additional Guidance Changes:

- **Effective March 1st, Restaurants will no longer be subject to a % seated capacity limit and their capacity is limited only by the requirement of 6 feet between tables**
 - Musical performances allowed in restaurants (with appropriate distancing)
 - 90 minute time limit on tables *stays in place*
 - Limit of no more than 6 per table *stays in place*
 - Food courts *remain closed*
- **Effective March 1st, Fitting rooms may open in all retail businesses**

Gatherings Limit: Effective March 22nd, subject to public health data, the gatherings limit will increase for event venues and public settings, but will stay the same in private settings:

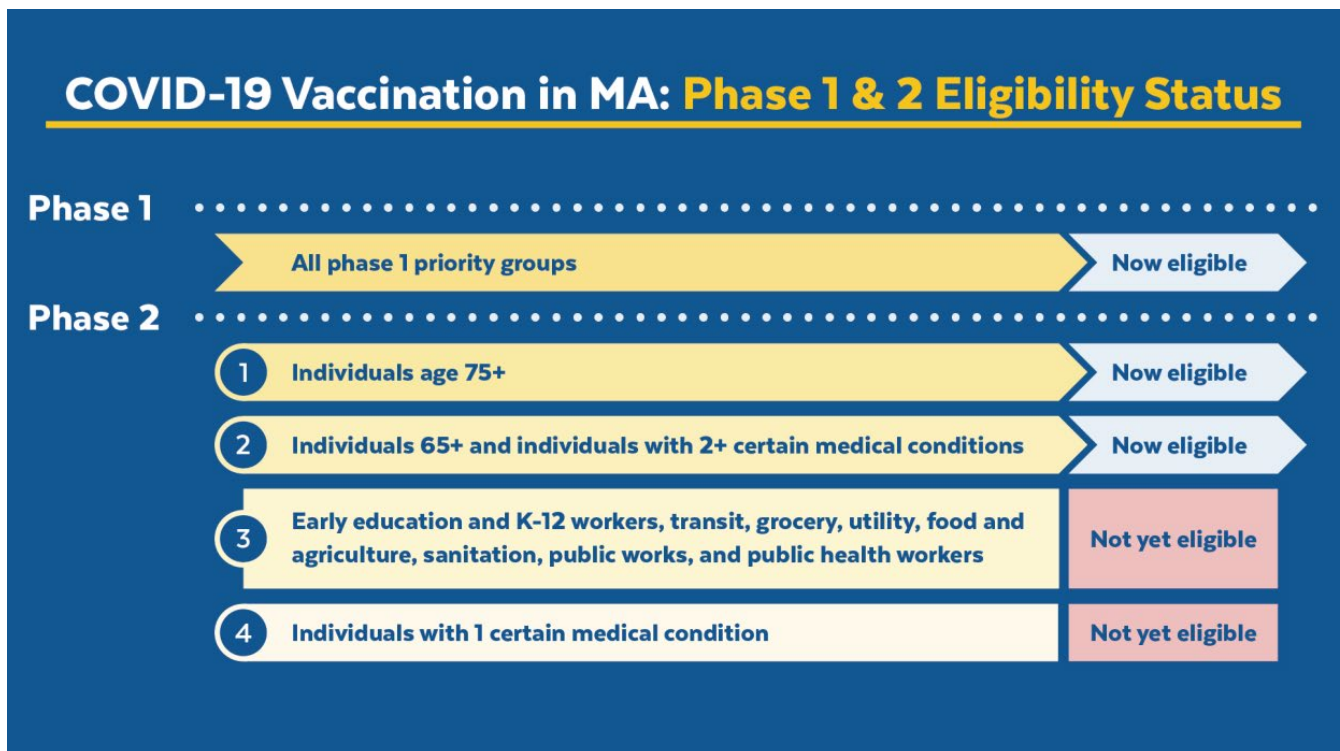
- **Event Venues and Public Settings:**
 - 100 indoor
 - 150 outdoor
- **Private Settings (such as private residences):**
 - 10 indoors
 - 25 outdoors

Phase 4, Step 1: Effective March 22nd, subject to public health data, the Commonwealth will move into Phase 4, Step 1:

- Indoor and outdoor stadiums, arenas and ballparks will reopen with a **12%** capacity limit
 - A large venue is defined as a having a capacity of 5,000 or more
 - Venues with capacity under 5,000 are subject to the Indoor and Outdoor Performance Venue guidance
 - Large venues will be required to submit a safety plan to the Department of Public Health
- Overnight Camps will be allowed to open for Summer 2021
- Exhibition and Convention Halls may reopen, subject to gathering limits and event rules
- Dance floors may open at weddings and events *only*
- All other Phase 4 industries will not be able to open until a future reopening step. Those include:
 - Road races, street festivals, and parades, and fairs
 - Amusement parks, theme parks, outdoor water parks
 - Indoor water parks and indoor/outdoor ball pits
 - Saunas, hot-tubs, steam rooms at fitness centers, health clubs, and other facilities
 - Beer gardens/ breweries/ wineries/ distilleries
 - Bars, dance clubs, and nightclubs—venues offering entertainment, beverages, or dancing and not providing seated food service

Updated guidance can be found at www.mass.gov/reopening.

- **Current Status of Vaccination Priority Groups**



Phase 2 (February-March 2021)

Listed in order of priority:

- **Group 1:** [Individuals age 75+](#)
- **Group 2:** [Individuals age 65+, individuals with 2+ certain medical conditions,](#) and/or [residents and staff of low income and affordable senior housing.](#)
- **Not yet eligible: Group 3:** Other workers, including Early Education and K-12 workers, transit, utility, food and agriculture, sanitation, public works and public health workers.
- **Not yet eligible: Group 4:** Individuals with one [certain medical condition](#)

More details on all the COVID-19 vaccination phases can be found [here](#).

- **Steps to get your vaccination**

Step 1: Check your eligibility below or [use our tool](#)

Step 2: [Book an appointment](#)

Step 3: [Prepare for your appointment](#)

- **MA Vaccine Scheduling Resource Line**

The [Massachusetts Vaccine Scheduling Resource](#) Line is available to support people 75 and older to schedule a COVID-19 appointment if they are unable to use or have difficulty accessing the internet. **This line is reserved only for people who do not have internet access or have the capability to schedule an appointment online.**

The call center hours of operation:

- **Monday to Thursday from 8:30 a.m. to 8:00 p.m.**
- **Friday, Saturday, and Sunday from 8:30 a.m. to 5:00 p.m.**

For assistance scheduling, dial 2-1-1 and follow the prompts for vaccine appointments. The Massachusetts Scheduling Resource Line is available in English and Spanish and has translators available to support residents in approximately 100 additional languages.

This resource line is not to answer general questions about COVID-19 or provide individual health care advice. **The quickest and easiest way to schedule a vaccine appointment or check availability is to use the online system at mass.gov/covidvaccine.**

At this point, the Town does not have any vaccine for public distribution. Please go to the [COVID webpage](#) for vaccine information and updates.

- **Massachusetts Caregiver/Companion COVID-19 Vaccine Eligibility**

Effective Thursday, February 11th, an individual who accompanies a person age 75 or older to one of four mass vaccination sites to receive the vaccine will be eligible to receive the vaccine too, if they have an appointment booked. **Both the companion and the individual age 75 or older must have an appointment for the same day and both individuals must be present. Only one companion is permitted. The companion must attest that they are accompanying the individual to the appointment.**

[COVID-19 Vaccine in Massachusetts](#)

[COVID-19 Vaccination Locations](#)

[When can I get the COVID-19 Vaccine](#)

[COVID-19 frequently asked questions](#)

[How to prepare for your COVID-19 vaccine appointment](#)

- **Vaccine Hesitance Survey**

The Academic Public Health Volunteer Corps has developed a survey designed to assess the Massachusetts general public's feelings towards the COVID-19 vaccine and what underlying factors are associated with these feelings especially now as the vaccine is becoming available to the public. Its purpose is to assess attitudes of vaccination and degree of vaccine hesitancy among people in Massachusetts. Results will be used to understand communication needs and inform vaccine confidence messaging going forward. We are very much interested in hearing from our academic partners as this is a unique opportunity to learn more about vaccine attitudes in a population of public health students and professionals. Please take a few minutes to complete [this survey](#), share it through your academic outlets, colleagues, friends, family, and acquaintances. The more people take [the survey](#) the better.

Requirements: You must be 18 years or older and living in or a resident of Massachusetts

Time to complete: 10-15 minutes **Data collection:** completely anonymous

Link to the Survey: <https://redcap.link/MAvaccinesurvey>

QR Code to access the survey:

