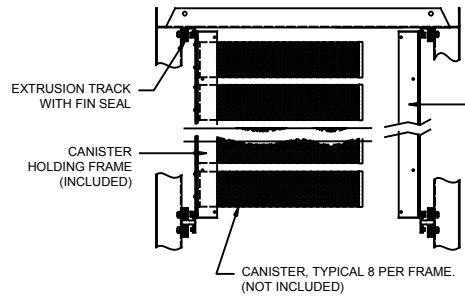
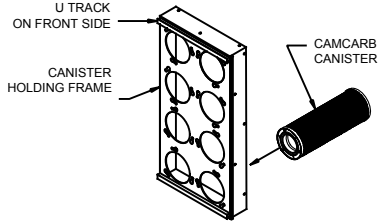


8	7	6	5	4	3	2	1	
DESCRIPTION	FILTERS HIGH / WIDE	ACTUAL DIMENSION	NUMBER OF CANISTERS	RATED AIRFLOW				
G/P-SMH-A-5X1	1/2 X 1	15 1/4" X 24"	8	1000 CFM				
G/P-SMH-A-5X2	1/2 X 2	15 1/4" X 48"	16	2000 CFM				
G/P-SMH-A-5X3	1/2 X 3	15 1/4" X 72"	24	3000 CFM				
G/P-SMH-A-5X4	1/2 X 4	15 1/4" X 96"	32	4000 CFM				
G/P-SMH-A-5X5	1/2 X 5	15 1/4" X 120"	40	5000 CFM				
G/P-SMH-A-5X6	1/2 X 6	15 1/4" X 144"	48	6000 CFM				
G/P-SMH-A-1X.5	1 X 1/2	27 1/4" X 12"	8	1000 CFM				
G/P-SMH-A-1X1	1 X 1	27 1/4" X 24"	16	2000 CFM				
G/P-SMH-A-1X1.5	1 X 1 1/2	27 1/4" X 36"	24	3000 CFM				
G/P-SMH-A-1X2	1 X 2	27 1/4" X 48"	32	4000 CFM				
G/P-SMH-A-1X2.5	1 X 2 1/2	27 1/4" X 60"	40	5000 CFM				
G/P-SMH-A-1X3	1 X 3	27 1/4" X 72"	48	6000 CFM				
G/P-SMH-A-1X3.5	1 X 3 1/2	27 1/4" X 84"	56	7000 CFM				
G/P-SMH-A-1X4	1 X 4	27 1/4" X 96"	64	8000 CFM				
G/P-SMH-A-1X4.5	1 X 4 1/2	27 1/4" X 108"	72	9000 CFM				
G/P-SMH-A-1X5	1 X 5	27 1/4" X 120"	80	10000 CFM				
G/P-SMH-A-1X5.5	1 X 5 1/2	27 1/4" X 132"	88	11000 CFM				
G/P-SMH-A-1X6	1 X 6	27 1/4" X 144"	96	12000 CFM				
G/P-SMH-A-1.5X1	1 1/2 X 1	39 1/2" X 24"	24	3000 CFM				
G/P-SMH-A-1.5X2	1 1/2 X 2	39 1/2" X 48"	48	6000 CFM				
G/P-SMH-A-1.5X3	1 1/2 X 3	39 1/2" X 72"	72	9000 CFM				
G/P-SMH-A-1.5X4	1 1/2 X 4	39 1/2" X 96"	96	12000 CFM				
G/P-SMH-A-1.5X5	1 1/2 X 5	39 1/2" X 120"	120	15000 CFM				
G/P-SMH-A-1.5X6	1 1/2 X 6	39 1/2" X 144"	144	18000 CFM				
G/P-SMH-A-2X.5	2 X 1/2	51 1/2" X 12"	16	2000 CFM				
G/P-SMH-A-2X1	2 X 1	51 1/2" X 24"	32	4000 CFM				
G/P-SMH-A-2X1.5	2 X 1 1/2	51 1/2" X 36"	48	6000 CFM				
G/P-SMH-A-2X2	2 X 2	51 1/2" X 48"	64	8000 CFM				
G/P-SMH-A-2X2.5	2 X 2 1/2	51 1/2" X 60"	80	10000 CFM				
G/P-SMH-A-2X3	2 X 3	51 1/2" X 72"	96	12000 CFM				
G/P-SMH-A-2X3.5	2 X 3 1/2	51 1/2" X 84"	112	14000 CFM				
G/P-SMH-A-2X4	2 X 4	51 1/2" X 96"	128	16000 CFM				
G/P-SMH-A-2X4.5	2 X 4 1/2	51 1/2" X 108"	144	18000 CFM				
G/P-SMH-A-2X5	2 X 5	51 1/2" X 120"	160	20000 CFM				
G/P-SMH-A-2X5.5	2 X 5 1/2	51 1/2" X 132"	176	22000 CFM				
G/P-SMH-A-2X6	2 X 6	51 1/2" X 144"	192	24000 CFM				
G/P-SMH-A-2.5X1	2 1/2 X 1	63 3/4" X 24"	40	5000 CFM				
G/P-SMH-A-2.5X2	2 1/2 X 2	63 3/4" X 48"	80	10000 CFM				
G/P-SMH-A-2.5X3	2 1/2 X 3	63 3/4" X 72"	120	15000 CFM				
G/P-SMH-A-2.5X4	2 1/2 X 4	63 3/4" X 96"	160	20000 CFM				
G/P-SMH-A-2.5X5	2 1/2 X 5	63 3/4" X 120"	200	25000 CFM				
G/P-SMH-A-2.5X6	2 1/2 X 6	63 3/4" X 144"	240	30000 CFM				
G/P-SMH-A-3X.5	3 X 1/2	75 3/4" X 12"	24	3000 CFM				
G/P-SMH-A-3X1	3 X 1	75 3/4" X 24"	48	6000 CFM				
G/P-SMH-A-3X1.5	3 X 1 1/2	75 3/4" X 36"	72	9000 CFM				
G/P-SMH-A-3X2	3 X 2	75 3/4" X 48"	96	12000 CFM				
G/P-SMH-A-3X2.5	3 X 2 1/2	75 3/4" X 60"	120	15000 CFM				
G/P-SMH-A-3X3	3 X 3	75 3/4" X 72"	144	18000 CFM				
G/P-SMH-A-3X3.5	3 X 3 1/2	75 3/4" X 84"	168	21000 CFM				
G/P-SMH-A-3X4	3 X 4	75 3/4" X 96"	192	24000 CFM				
G/P-SMH-A-3X4.5	3 X 4 1/2	75 3/4" X 108"	216	27000 CFM				
G/P-SMH-A-3X5	3 X 5	75 3/4" X 120"	240	30000 CFM				
G/P-SMH-A-3X5.5	3 X 5 1/2	75 3/4" X 132"	264	33000 CFM				
G/P-SMH-A-3X6	3 X 6	75 3/4" X 144"	288	36000 CFM				
G/P-SMH-A-3.5X1	3 1/2 X 1	88" X 24"	56	7000 CFM				
G/P-SMH-A-3.5X2	3 1/2 X 2	88" X 48"	112	14000 CFM				
G/P-SMH-A-3.5X3	3 1/2 X 3	88" X 72"	168	21000 CFM				
G/P-SMH-A-3.5X4	3 1/2 X 4	88" X 96"	224	28000 CFM				
G/P-SMH-A-3.5X5	3 1/2 X 5	88" X 120"	280	35000 CFM				
G/P-SMH-A-3.5X6	3 1/2 X 6	88" X 144"	336	42000 CFM				
G/P-SMH-A-4X.5	4 X 1/2	100" X 12"	32	4000 CFM				
G/P-SMH-A-4X1	4 X 1	100" X 24"	64	8000 CFM				
G/P-SMH-A-4X1.5	4 X 1 1/2	100" X 36"	96	12000 CFM				
G/P-SMH-A-4X2	4 X 2	100" X 48"	128	16000 CFM				
G/P-SMH-A-4X2.5	4 X 2 1/2	100" X 60"	160	20000 CFM				
G/P-SMH-A-4X3	4 X 3	100" X 72"	192	24000 CFM				
G/P-SMH-A-4X3.5	4 X 3 1/2	100" X 84"	224	28000 CFM				
G/P-SMH-A-4X4	4 X 4	100" X 96"	256	32000 CFM				
G/P-SMH-A-4X4.5	4 X 4 1/2	100" X 108"	288	36000 CFM				
G/P-SMH-A-4X5	4 X 5	100" X 120"	320	40000 CFM				
G/P-SMH-A-4X5.5	4 X 5 1/2	100" X 132"	352	44000 CFM				
G/P-SMH-A-4X6	4 X 6	100" X 144"	384	48000 CFM				



**Holding Frame Installation Detail**  
 Install frames by sliding holding frame U track around extrusion track. For more information please see CamCarb Canister O&M

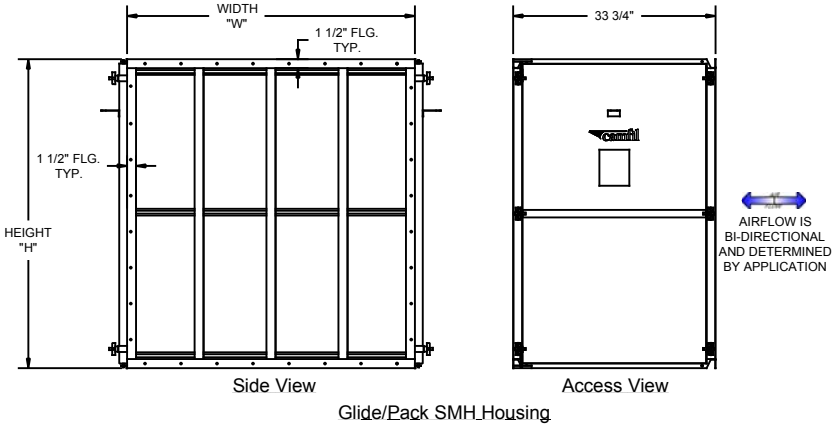
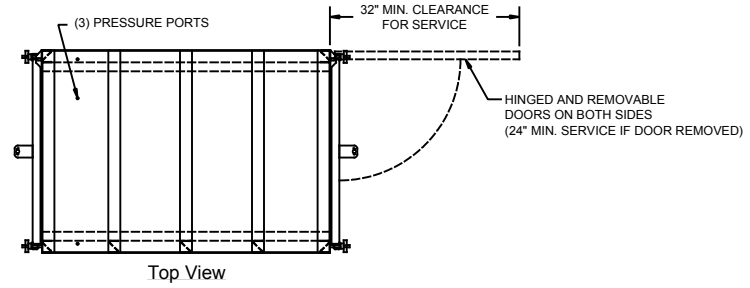


**Canister Installation Detail**  
 Holds 8 canisters per 24"x12" or 12"x24"  
 Canisters installed from back side.

**Specifications**

**Housing Construction:**  
 Housing shall be constructed of 16 ga. material (Aluminized and Stainless Steel available). Housing is equipped with extruded aluminum tracks, tracks include a polypropylene fin seal to limit air bypass around frames. Each housing comes equipped with hinged/removable access doors on each end, canister holding frames and Type 8 holding frames for pre or post filtration. Housing is completely factory assembled, with (3) pressure ports and predrilled standing flanges to facilitate attachment to other system components.

**General Notes:**  
 Leakage into housing from ambient is guaranteed to be less than 0.5% of rated airflow. Canisters and pre/post filters are not included with housing and must be purchased separately. Please see Camfil's product literature for more information or contact your local Camfil sales representative.



Glide/Pack SMH Housing

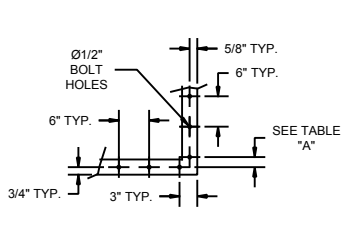


TABLE "A"	
HOUSING HEIGHT "A" DIMENSION	
1/2 HIGH	3 7/8"
1 HIGH	3 7/8"
1 1/2 HIGH	4"
2 HIGH	4"
2 1/2 HIGH	4 1/8"
3 HIGH	4 1/8"
3 1/2 HIGH	4 1/4"
4 HIGH	4 1/4"

**CUSTOMER APPROVAL BLOCK**

YOUR APPROVAL OF THIS PRINT AUTHORIZES CAMFIL TO PROCEED WITH MATERIAL PROCUREMENT, TOOLING AND PRODUCT FABRICATION. ANY CHANGES MADE AFTER APPROVAL MAY INCUR FURTHER EXPENSES TO THE CUSTOMER

OK AS IS    OK WITH REVISIONS    SEND REVISED DWG.

SIGNATURE/DATE \_\_\_\_\_

APPROVED BY: \_\_\_\_\_ DATE: \_\_\_\_\_ DRAWN BY: \_\_\_\_\_ DATE: \_\_\_\_\_

TLC   3/10/16



© Camfil <http://www.camfil.us>

**DESCRIPTION**  
 CamCarb G/P-SMH Sorbent Media Housing

SHEET	DRAWING NUMBER	REV.
1 of 1	M25 GP SMH	E